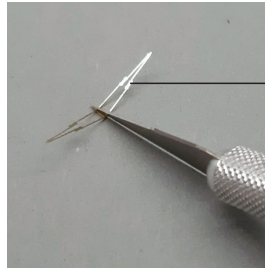


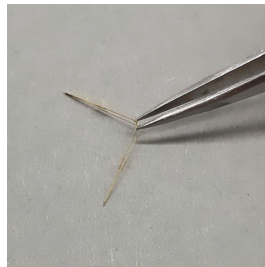
We all spend immeasurable time studying photos of the airplanes - spotting the nuances of surface finish, counting rivets, getting awe-inspired, harvesting fuel for internet forum fights... Rarely does one get to see the other end of photographs.

In this set you will find the variety of 1/144 cameras and the tripods to support them. The cameras are quite generic, mostly due to them being on the smaller side of things. Their general shape should answer the description of gear used by photographers in 1930s throughout the late 1960s:

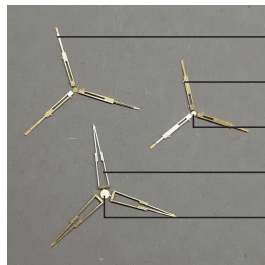
- 6x6 cm twin-lens reflex camera that would resemble Rolleiflex/Rolleicord or Yashica TLR
- 4x5 inch press camera coupled with bulb flash gun - Graflex Speed Graphic as an obvious example
- 8x10 inch large format view camera



1



Small (narrow) tripod legs are relatively easy to fold. Large tripod legs are trickier to fold evenly. First press the back of fold line with the blade until the halves are at about 135° to each other (top photo). Then follow the fold gently until about 90-80° using your fingers. In the final stage use tweezers positioned as shown on bottom photo - the halves should snap together, requiring just a hint of CA glue at the tips to hold them together.



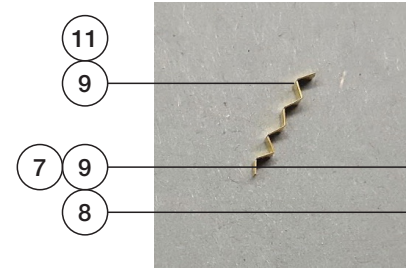
3

2

4

1

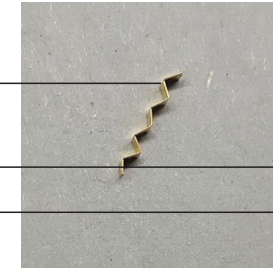
5



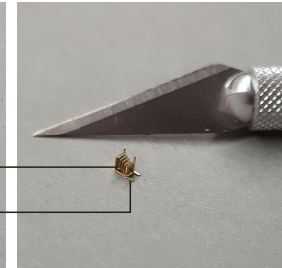
7

9

8



This zig-zag is to become a bellows...

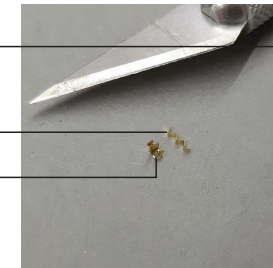


...in the 8x10" view camera

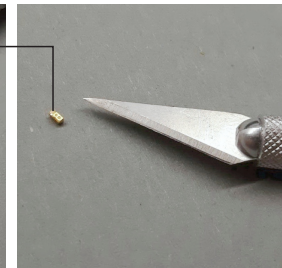
6

11

10



4x5" is obviously about half the size



6x6 is easiest of them all

