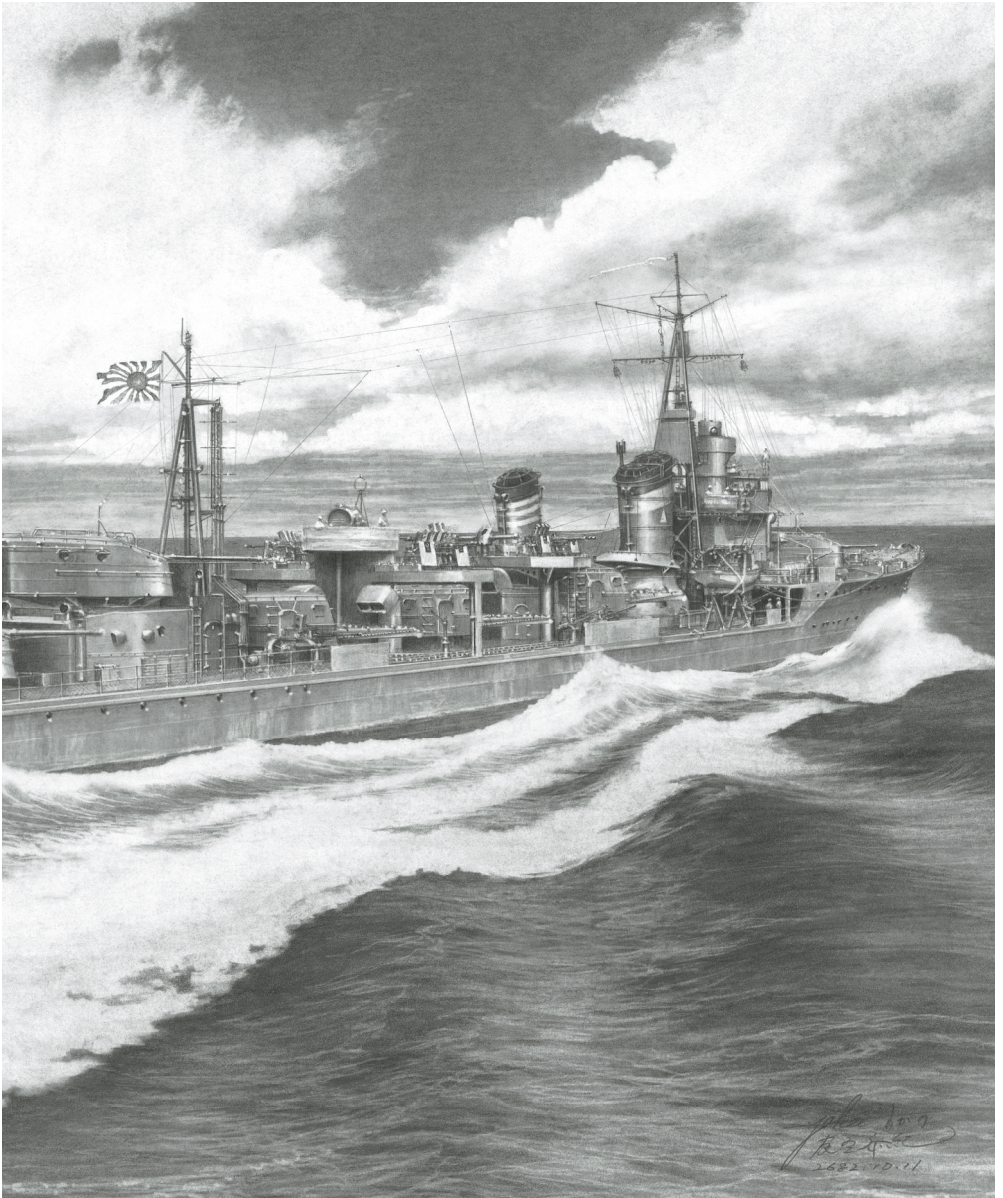


**SO70026**

**1/700 IJN Destroyer Shimakaze 1943/44**  
Highly Detailed Waterline Resin Kit

**Shelf  
Oddity**



# SO70026

## 1/700 IJN Destroyer Shimakaze 1943/44

### Highly Detailed Waterline Resin Kit

#### Material remarks:

This set has been designed with 0.02 mm accuracy using classic cast and 3D-printed resin parts as well as extremely thin brass.

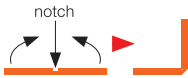
The resin parts are fragile. Please pay high attention when tooling. Do not over apply the cutting or drilling forces.

Using extensive force or aggressive attempts of removing material may lead to accidental parts breakage.

**The resin dust may be harmful for your health when inhaled. Please use the necessary safety equipment and ventilation when cutting and sanding resin parts.**

Etching process may decrease some dimensions and create irregularities.

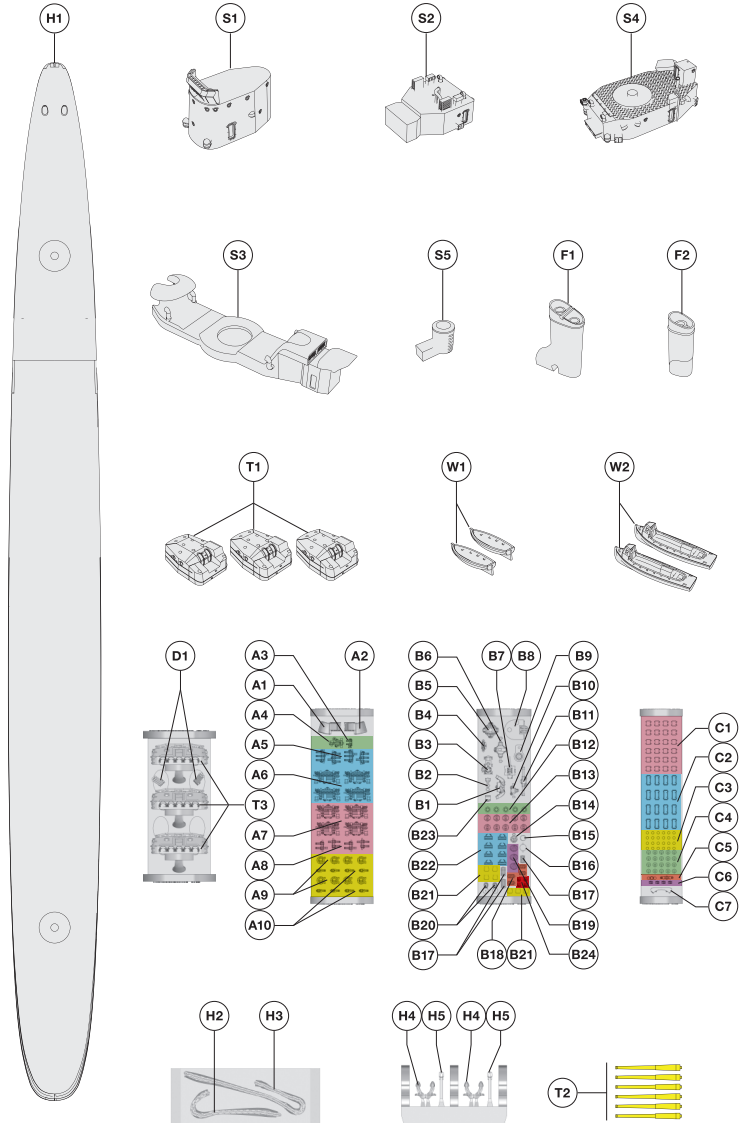
**A general rule of bending photoetched parts.**



Unless indicated otherwise, parts should be bent in a way to close the engraved notch inside of the bend.

Be careful while bending photoetched parts – please follow the information shown above.

The “edge-to-edge” assembly method using glue is highly recommended.



## Set information:





We did our best to create the complete kit allowing to build 1/700 scale waterline model ship however some additional components may be required.

While browsing this manual you might find some parts (metal wires, brass tubes or chains) which are not included in this set.

The decals in this set are the classic silk-screen waterslide ones. Each decal has its separate transfer film.

Use standard procedure for the decals application.

### Colour code:

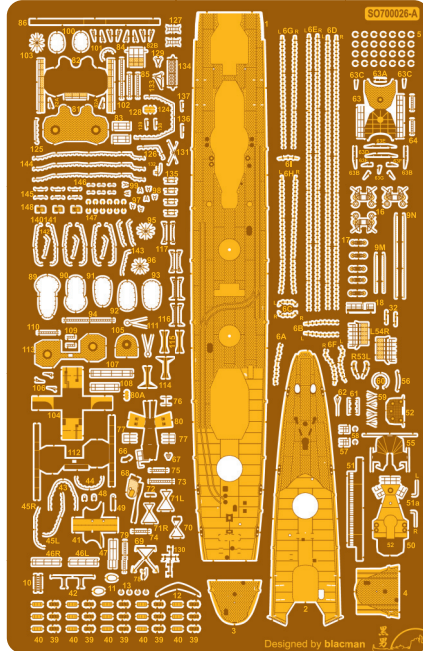
-  Cast resin parts
-  3D resin parts
-  Photoetched parts
-  CNC tooled brass parts

### Recommended other scratch materials:

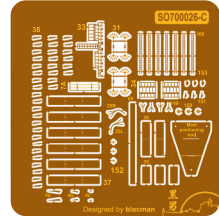
Plastic (or brass) rods of 0.15, 0.2, 0.25, 0.3 and 0.4 mm diameters.

0.06 mm rigging wire can be purchased separately in our web store as **SO70050** reel.

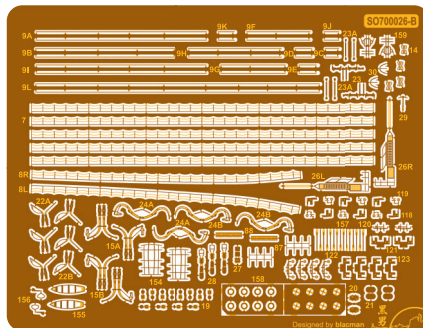
Photoetched fret A



Photoetched fret C



Photoetched fret B



Waterslide decals

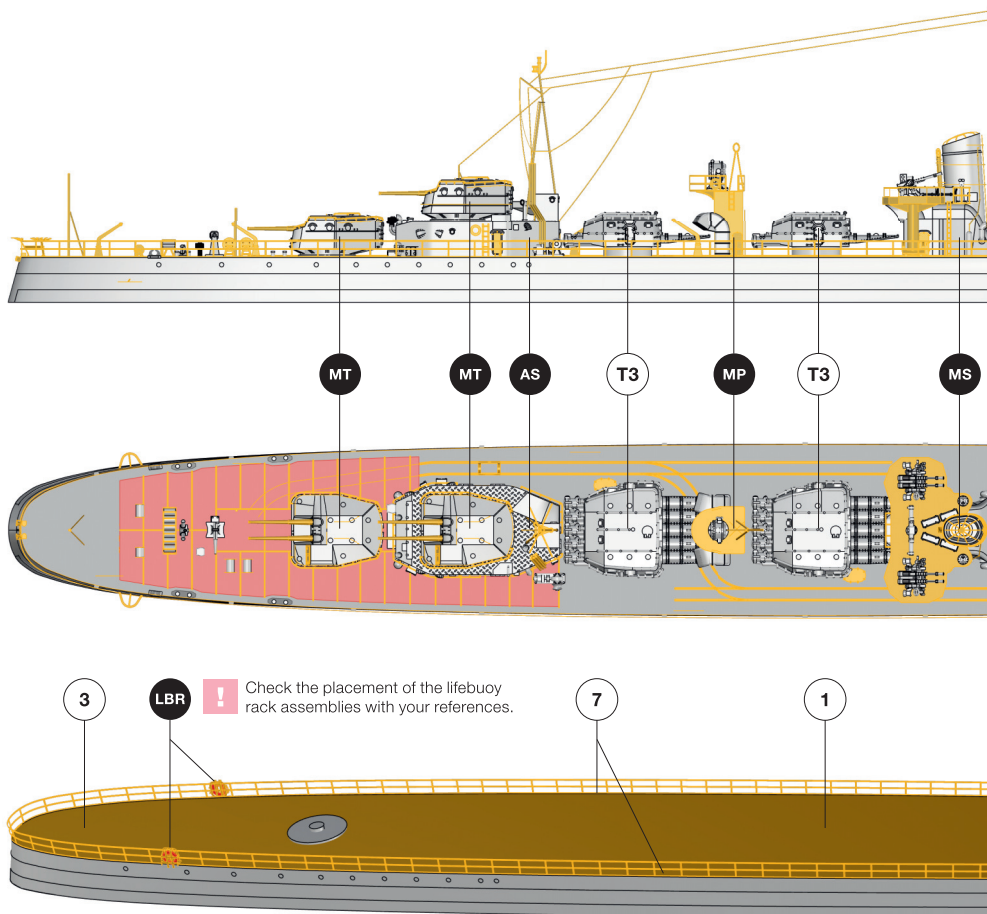


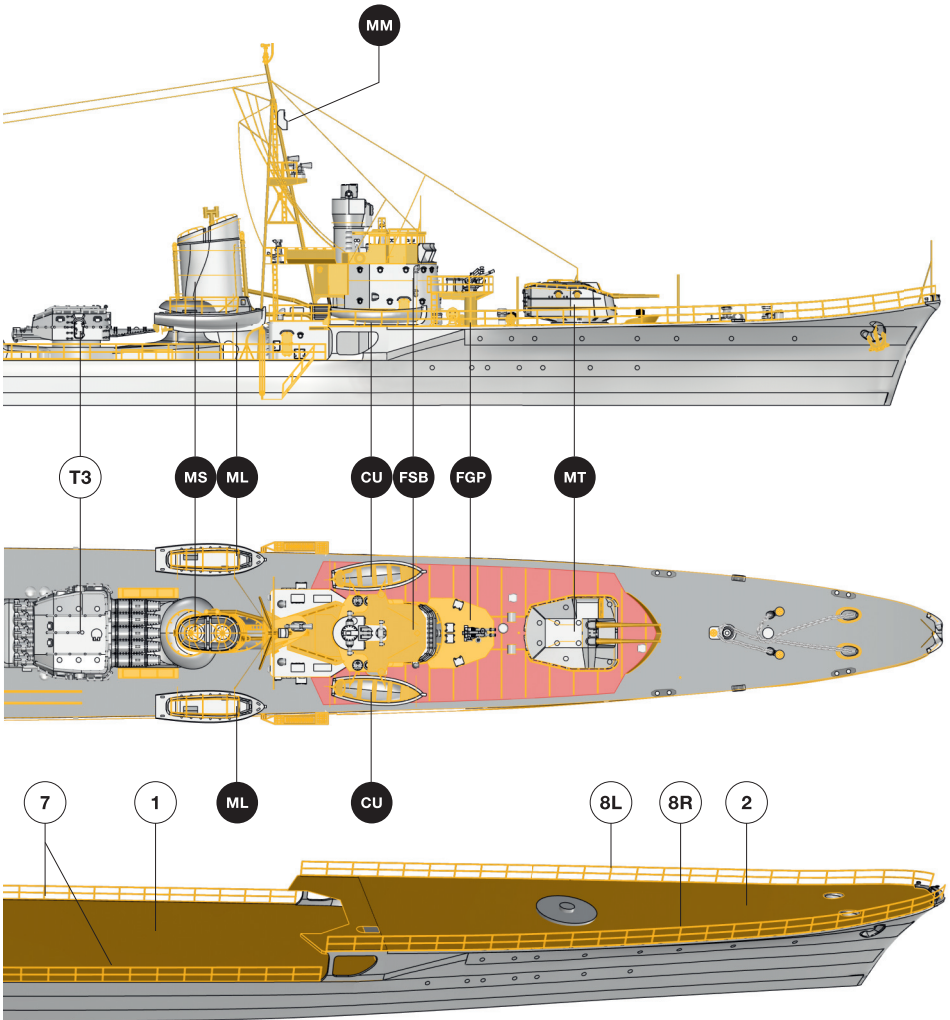
# S070026

## 1/700 IJN Destroyer Shimakaze 1943/44

Highly Detailed Waterline Resin Kit

General layout plan – 1943 version:



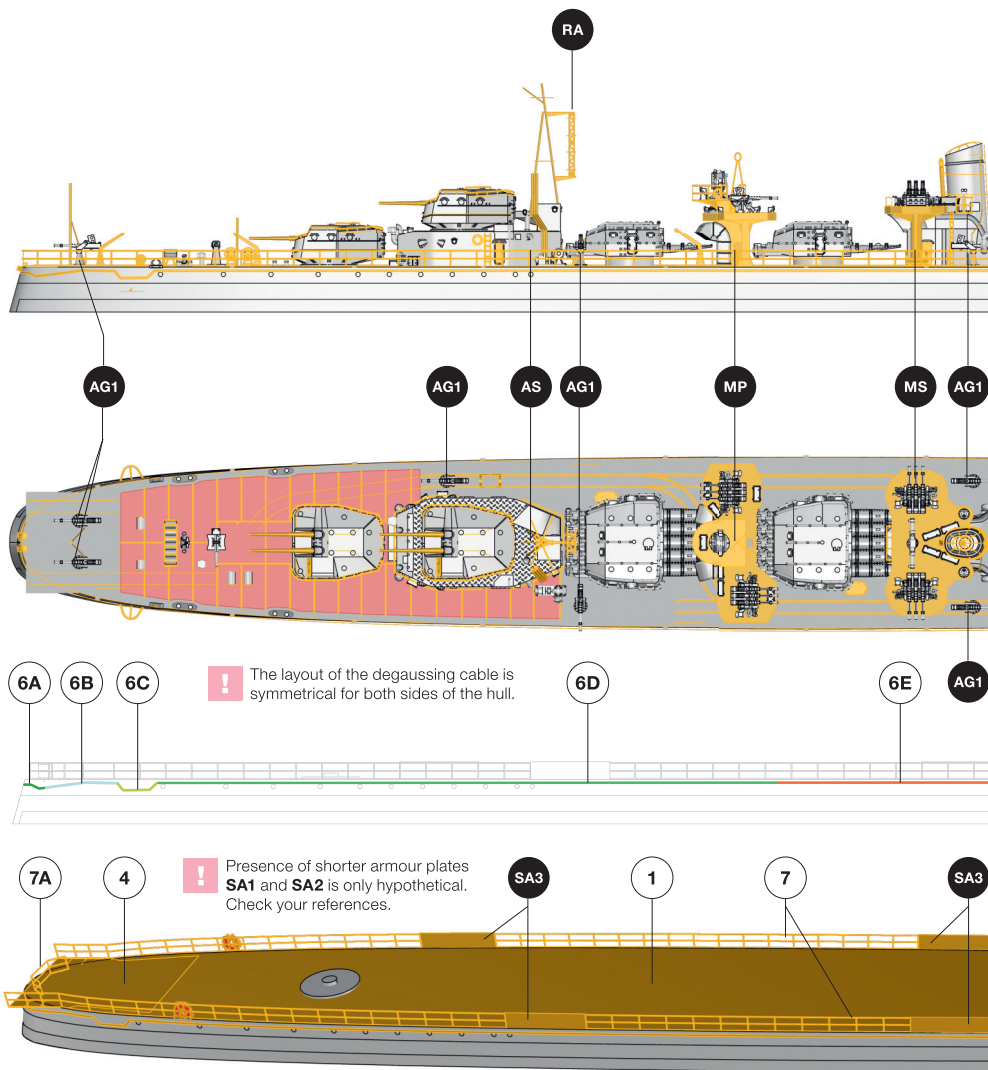


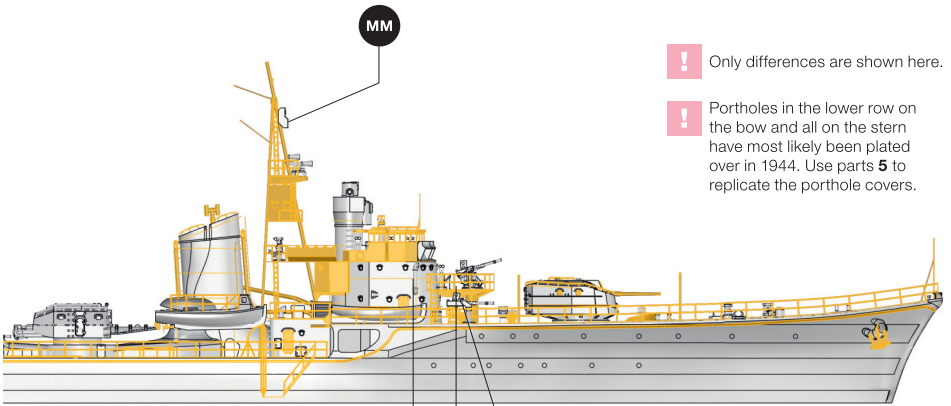
# SO70026

## 1/700 IJN Destroyer Shimakaze 1943/44

Highly Detailed Waterline Resin Kit

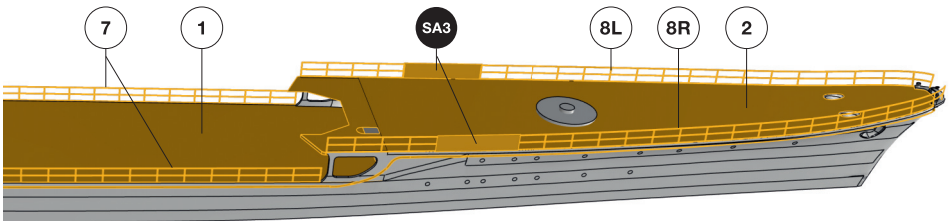
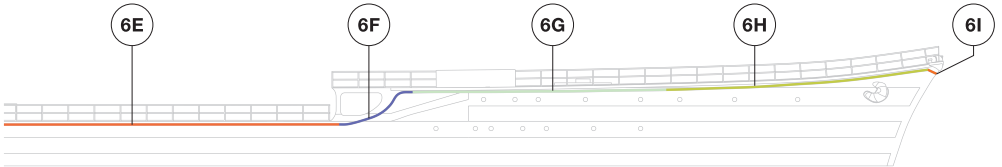
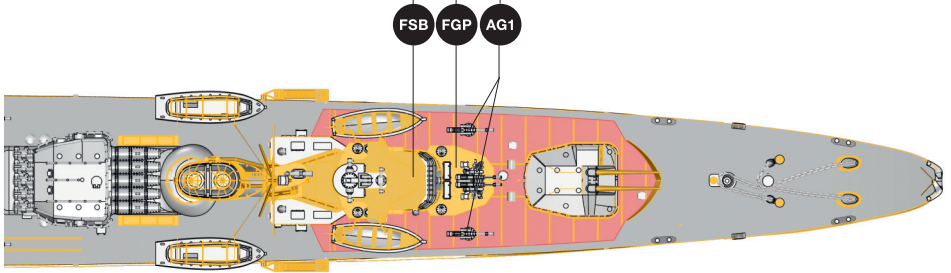
General layout plan – 1944 version:





! Only differences are shown here.

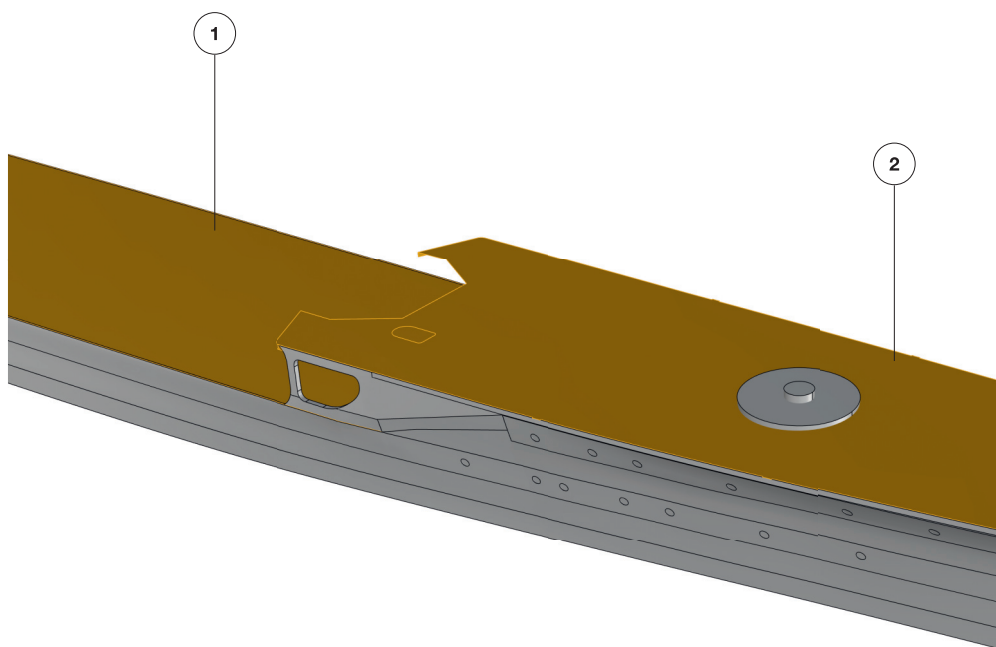
! Portholes in the lower row on the bow and all on the stern have most likely been plated over in 1944. Use parts 5 to replicate the porthole covers.



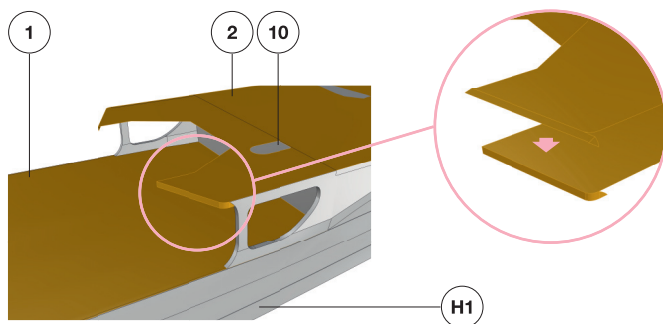
# S070026

1/700 IJN Destroyer Shimakaze 1943/44  
Highly Detailed Waterline Resin Kit

## Decks and hull assembly:



## Detail of the forecastle deck assembly:

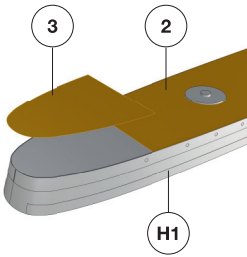


**!** Bend and shape the rear edge of the forecastle deck before attaching it to the hull.

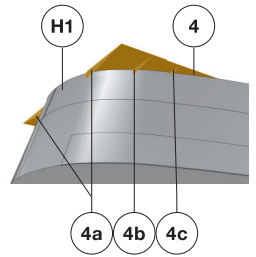
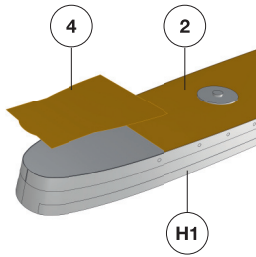


## Stern deck assembly:

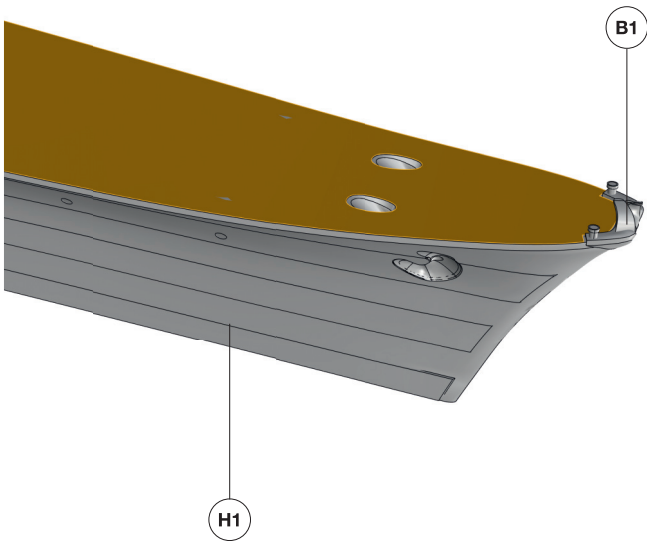
### 1943 version:



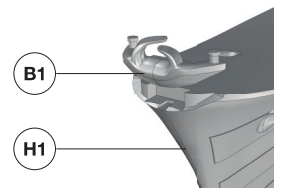
### 1944 version:



**!** Supports **4a**, **4b** and **4c** are placed symmetrically on both sides of the hull.



### Detail of the bow fairlead assembly:

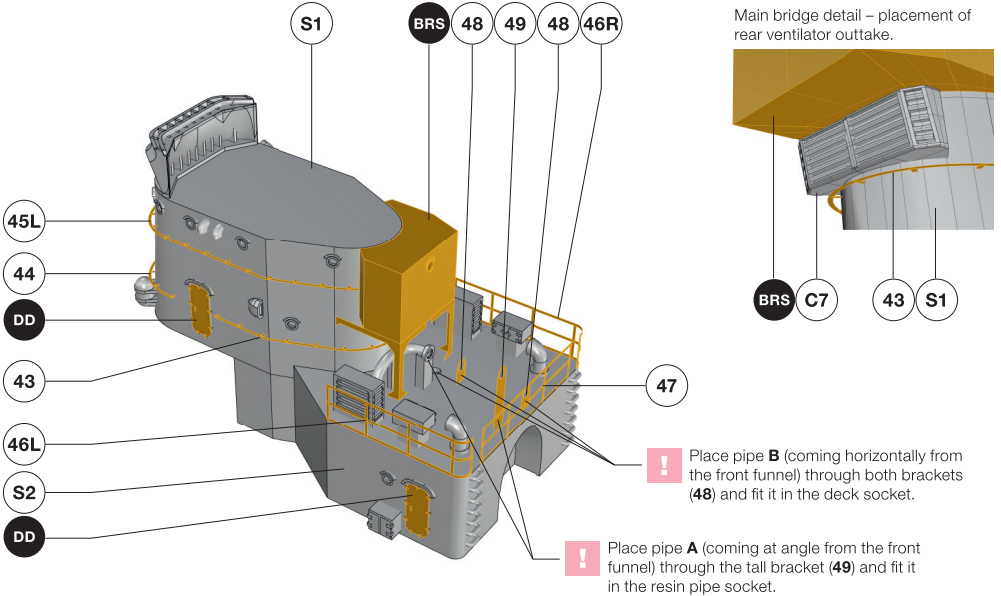


# S070026

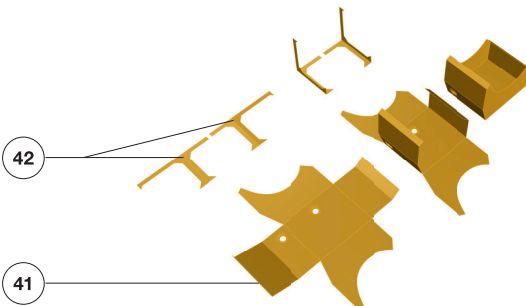
## 1/700 IJN Destroyer Shimakaze 1943/44

Highly Detailed Waterline Resin Kit

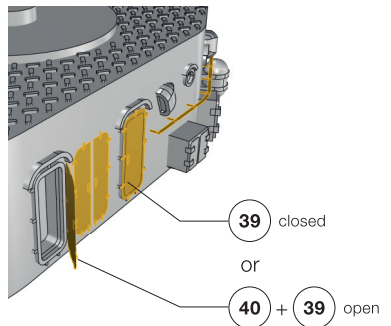
### FSB Forward superstructure and main bridge assembly:

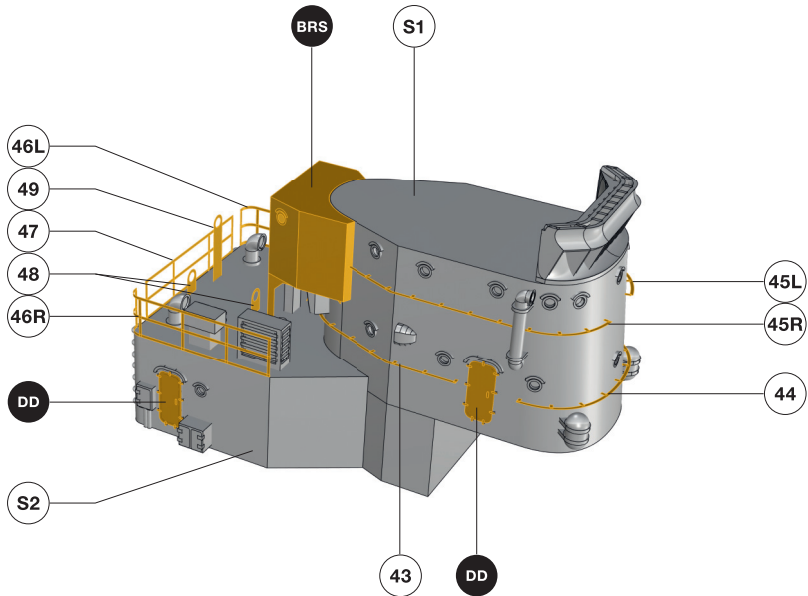


### BRS Bridge rear superstructure assembly sequence:



### DD Door detail:



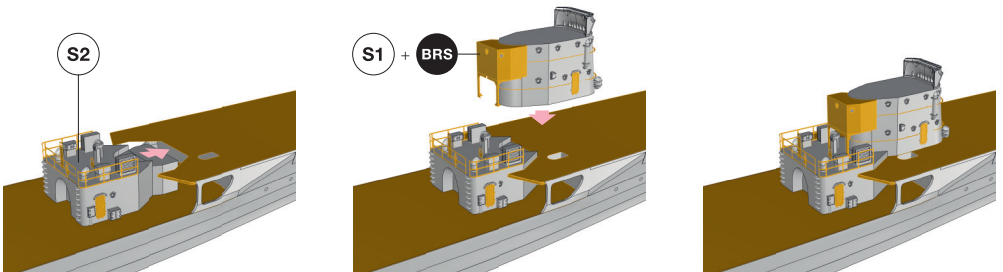


## Forward superstructure assembly sequence:

Step 1. Place the **S2** part on the main deck and push it forward to match the shape of the forecastle deck.

Step 2. Position the **S1** part on the forecastle deck and place it in the recession of the part **S2**.

A general view of the completed superstructure assembly.



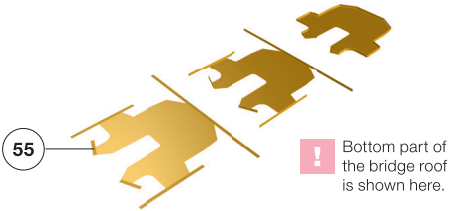
# SO70026

## 1/700 IJN Destroyer Shimakaze 1943/44

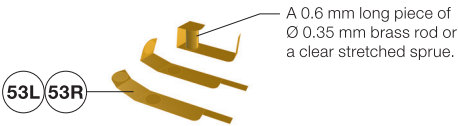
### Highly Detailed Waterline Resin Kit

#### FSB Forward superstructure and main bridge assembly – continued:

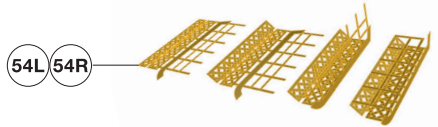
#### BR Bridge roof folding and assembly sequence:



#### NL Navigation lights folding sequence:

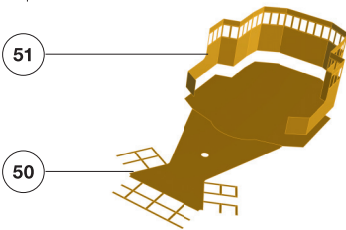


#### FB Flag baskets folding sequence:

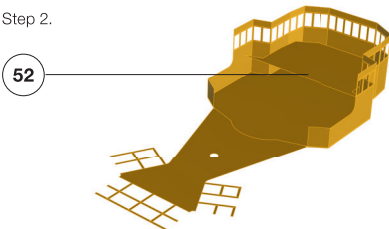


#### BD Bridge deck assembly sequence:

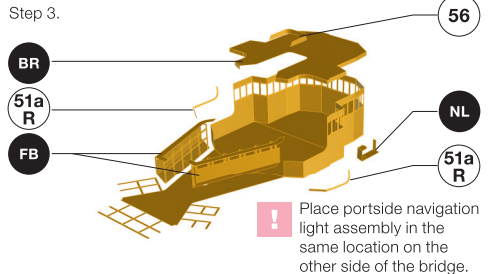
Step 1.



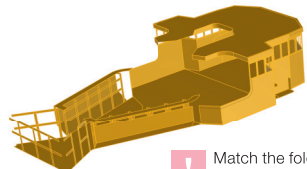
Step 2.



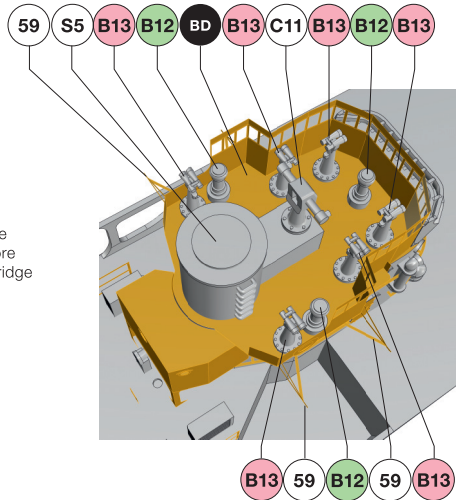
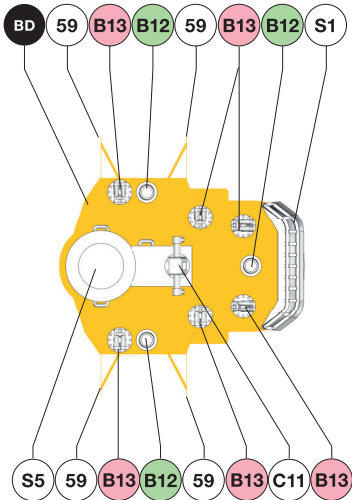
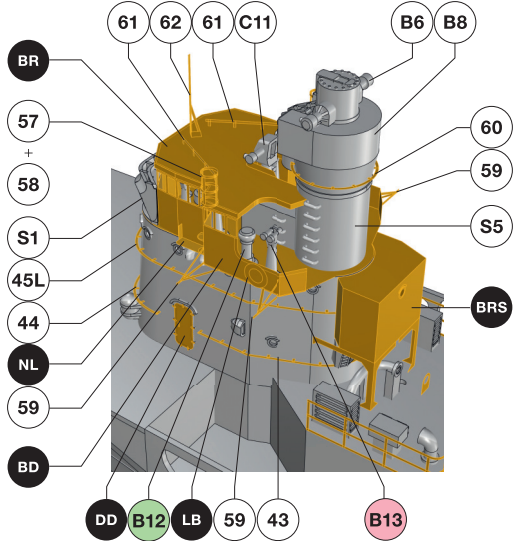
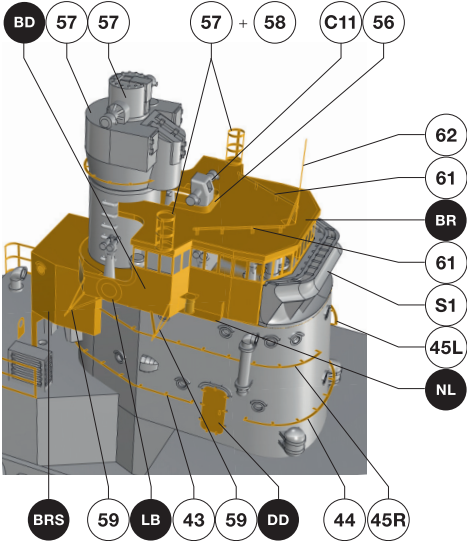
Step 3.



A general view of the completed bridge deck.



**!** The bridge deck assembly is shown here in an incomplete form to ensure better clarity of the building process.



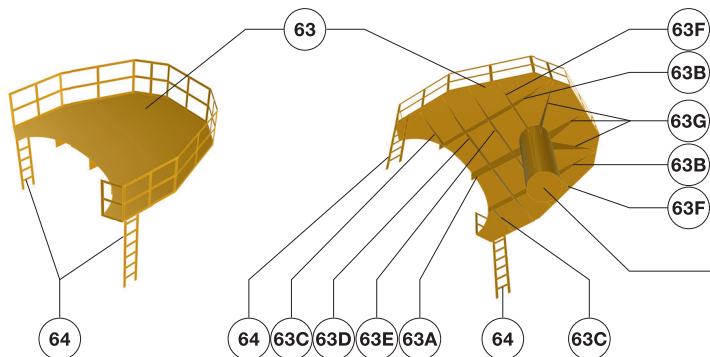
**!** Install the bridge equipment before attaching the bridge deck assembly.

# SO70026

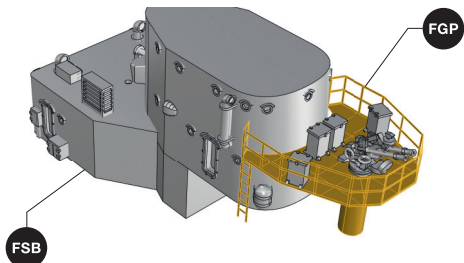
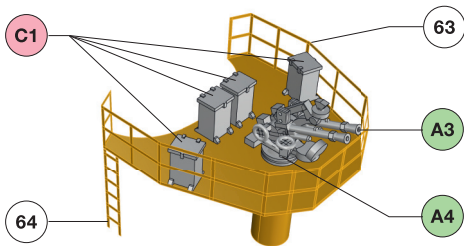
## 1/700 IJN Destroyer Shimakaze 1943/44

Highly Detailed Waterline Resin Kit

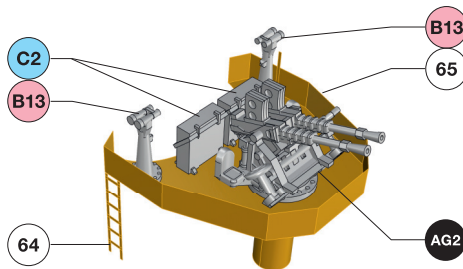
### FGP Forward gun platform assembly:



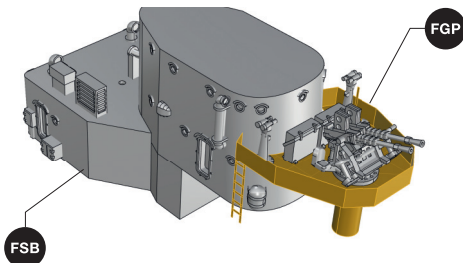
### 1943 version:



### 1944 version:

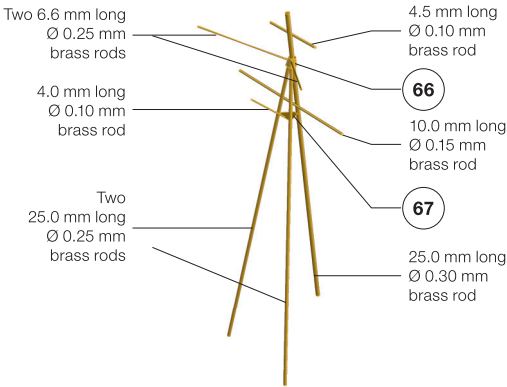
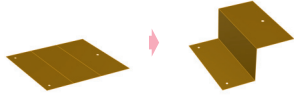


Remove railing from platform 63 and replace it with bulwark 65.

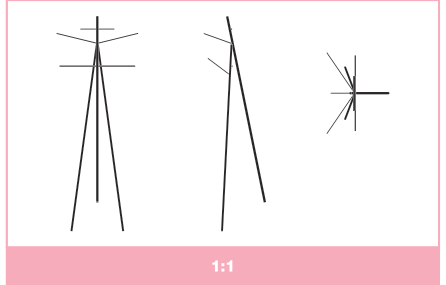


## MM Main mast assembly:

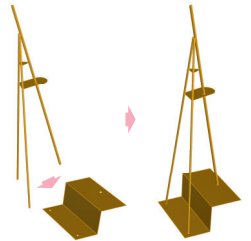
**!** Bend the mast positioning tool (fret C) as shown here as a first stage of the main mast assembly.



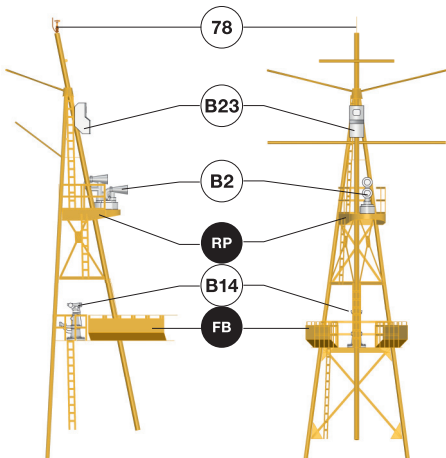
**!** Use this pattern to prepare main mast parts using Ø 0.30 mm; Ø 0.25 mm and Ø 0.10 mm brass rods.



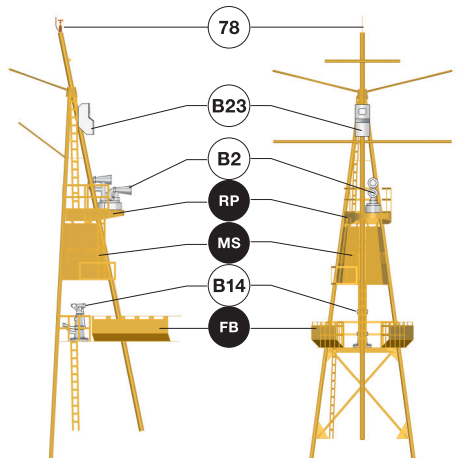
**!** Use the mast positioning tool at the early stage of mast assembly to get the proper geometry of main mast legs.



### 1943 version:



### 1944 version:

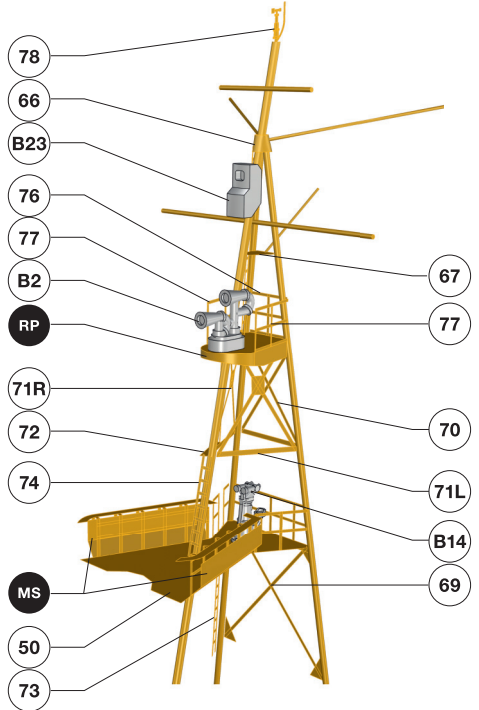
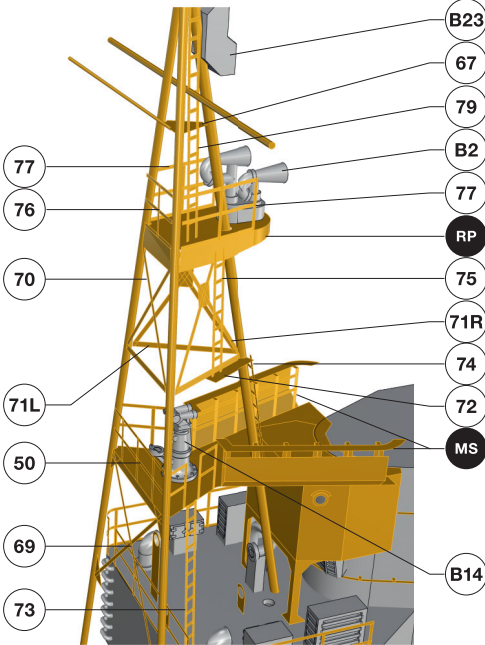


# S070026

## 1/700 IJN Destroyer Shimakaze 1943/44

### Highly Detailed Waterline Resin Kit

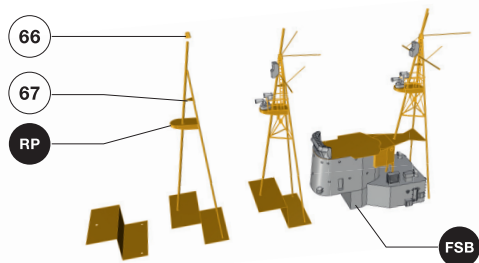
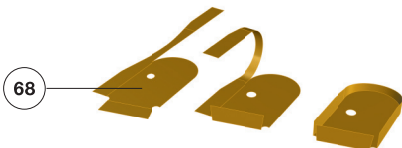
#### MM Main mast assembly – continued – 1943 version:



! Spare lengths of generic ladder are included in this set as part 160.

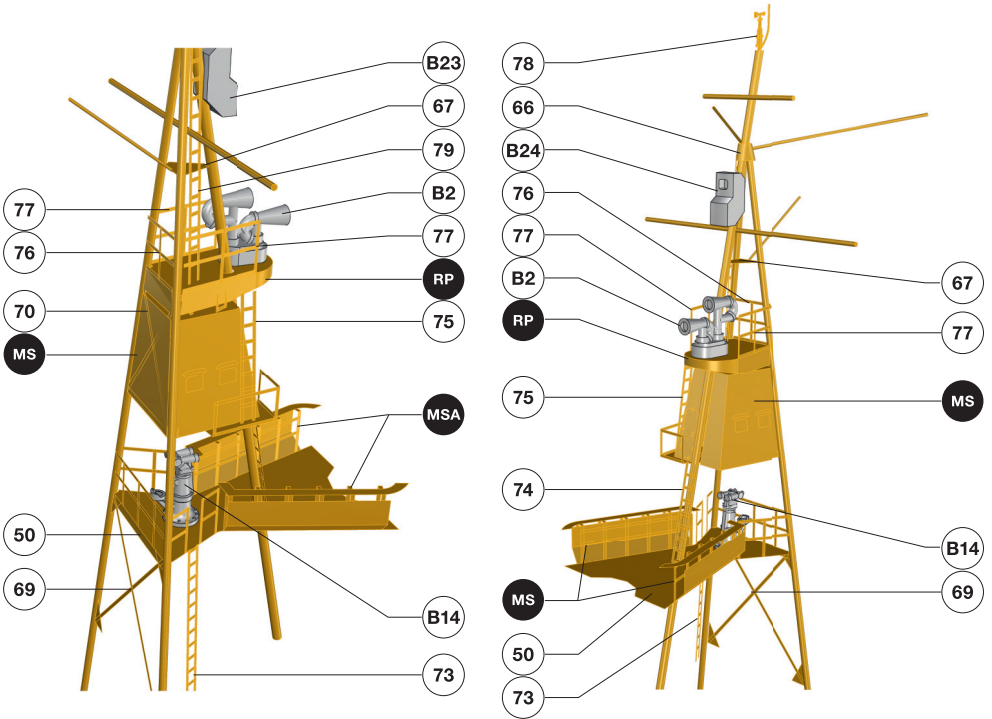
! The correct assembly and mating sequence of the main mast with the forward superstructure.

#### RP Radar platform folding sequence:

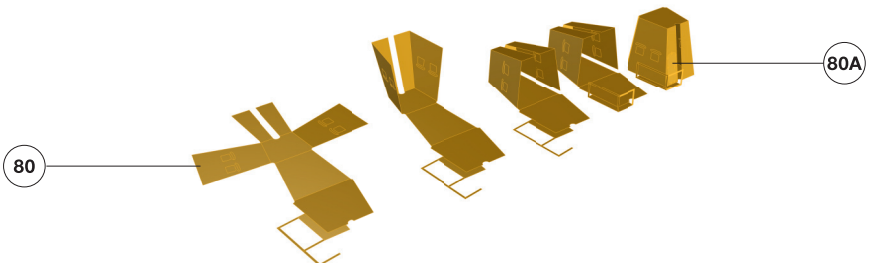




**MM** Main mast assembly – continued – 1944 version:



**MS** Mast superstructure folding and assembly sequence:

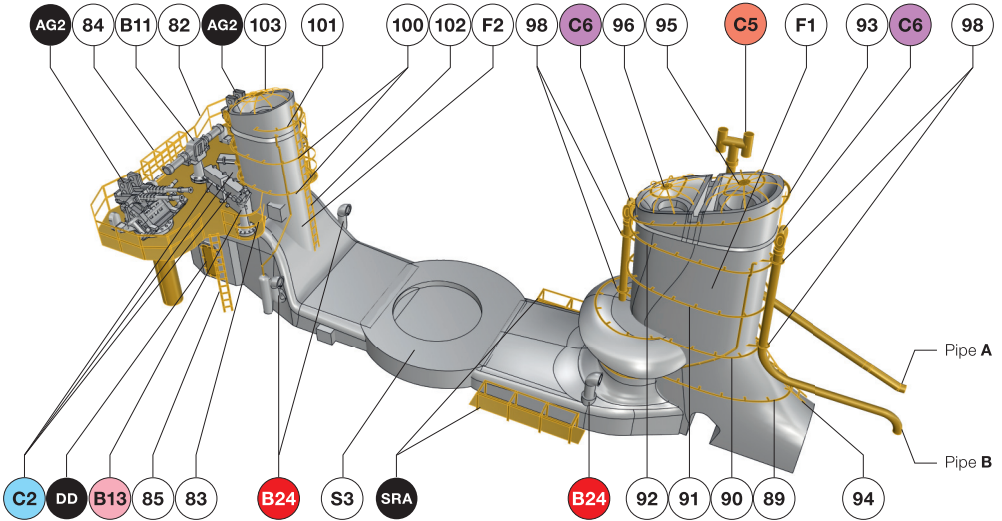


# SO70026

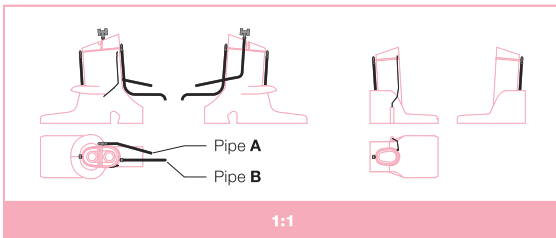
## 1/700 IJN Destroyer Shimakaze 1943/44

### Highly Detailed Waterline Resin Kit

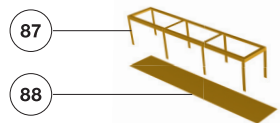
#### MS Midships superstructure assembly:



**!** Use the pattern below to prepare steam pipes from  $\varnothing 0.3$  mm and  $\varnothing 0.1$  mm brass rods.

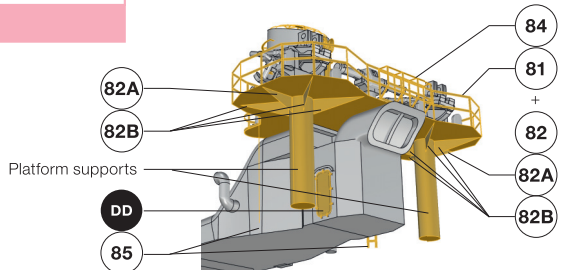


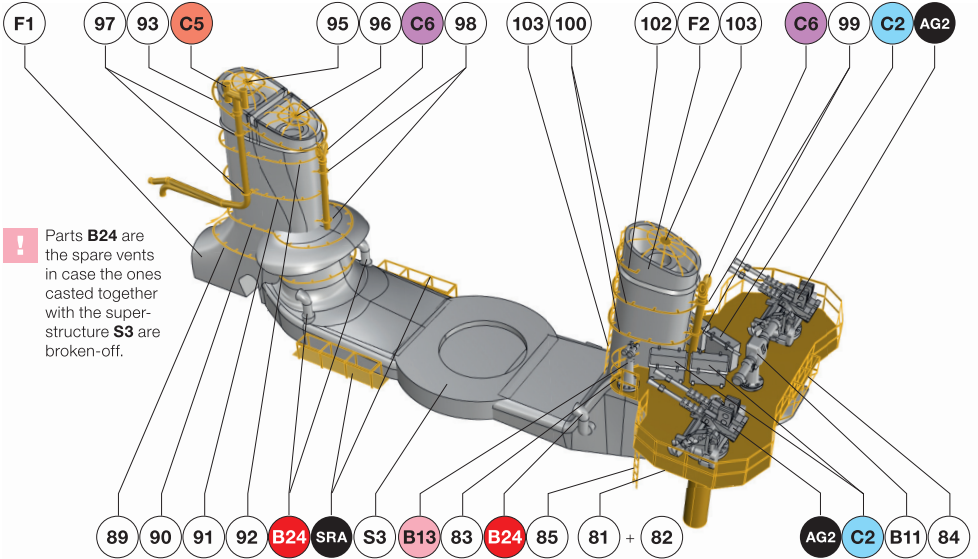
#### SRA Storage rack assembly:



**!** Note that the floor **88** needs to be in a distance 1 mm from the deck

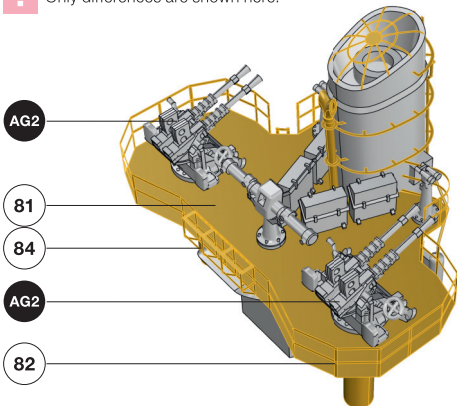
**!** Use this pattern to prepare platform supports from 5.0 mm long  $\varnothing 1.0$  mm brass rods.





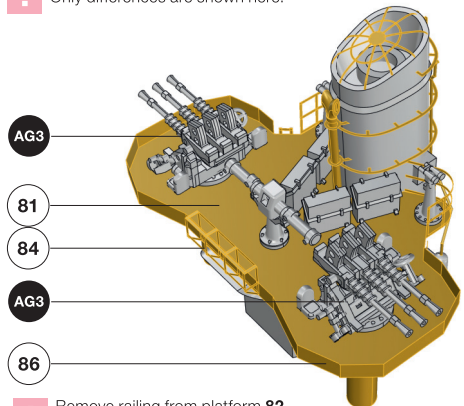
### 1943 version:

**!** Only differences are shown here.



### 1944 version:

**!** Only differences are shown here.

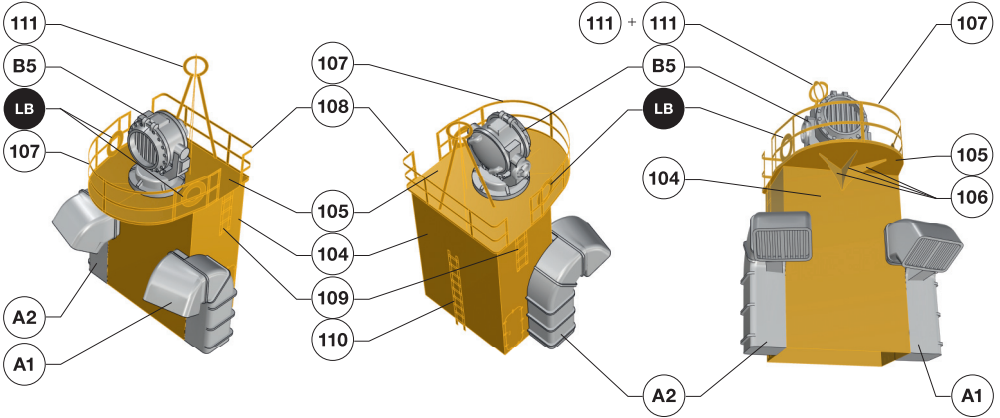


# SO70026

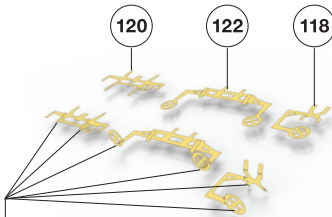
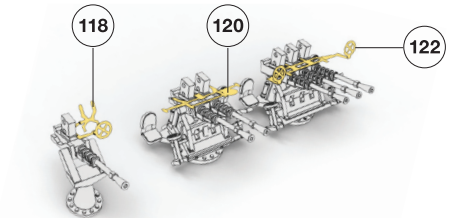
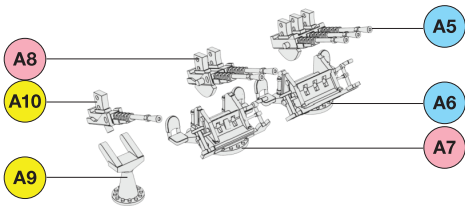
## 1/700 IJN Destroyer Shimakaze 1943/44

Highly Detailed Waterline Resin Kit

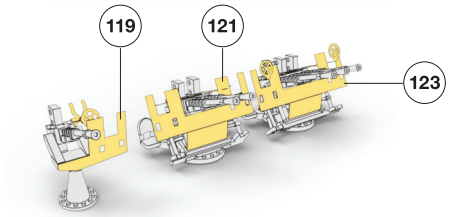
### MP Midships platform assembly – 1943 version:



### AG1 AG2 AG3 Single, double and triple 25 mm AA guns

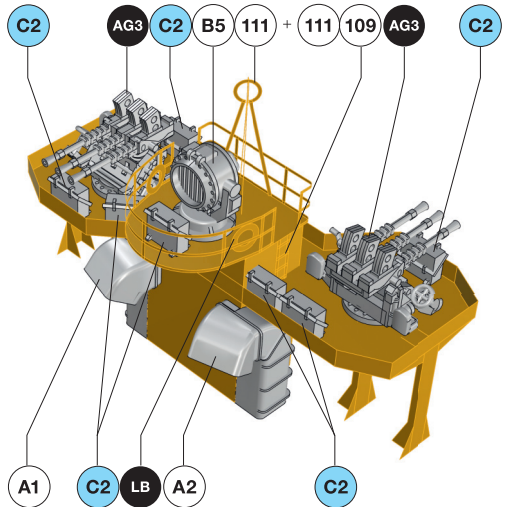
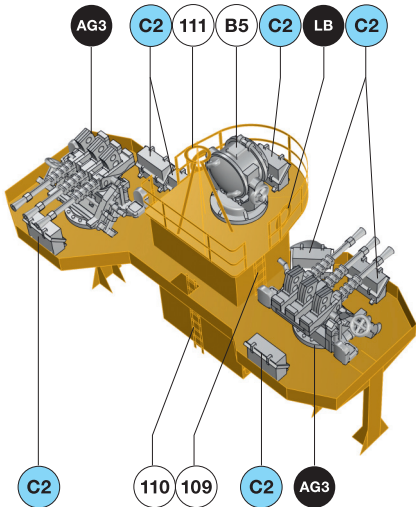
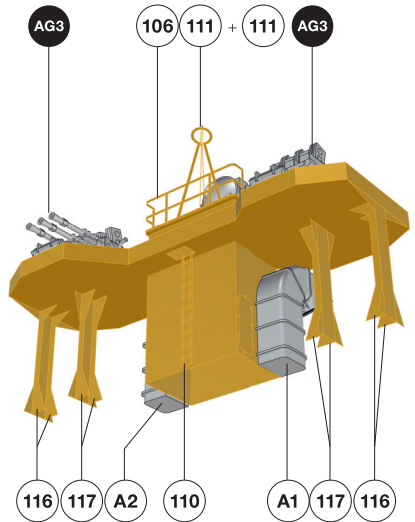
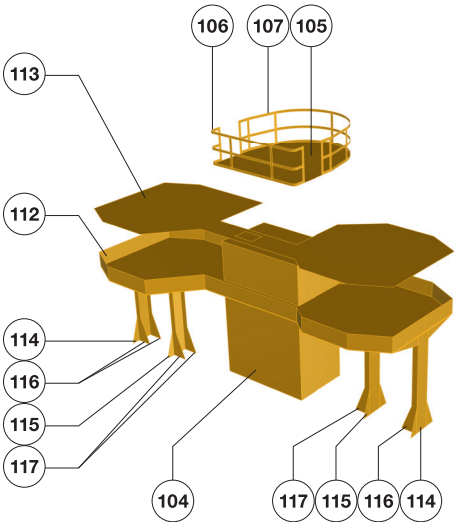


! Fold appropriate parts of both aiming harnesses.



! Blast covers might have been used in both 1943 and 1944 configurations.

**MP** Midships platform assembly – 1944 version:

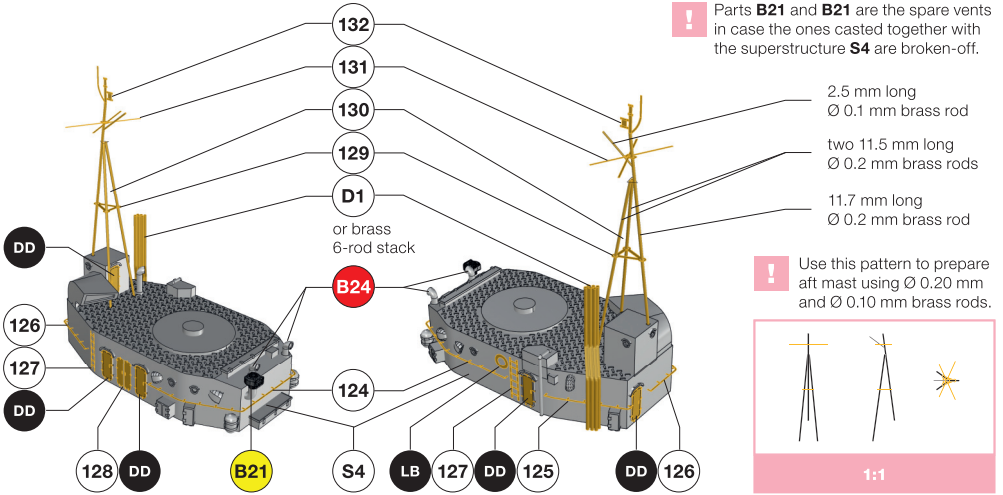


# S070026

## 1/700 IJN Destroyer Shimakaze 1943/44

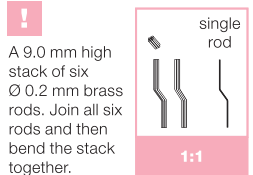
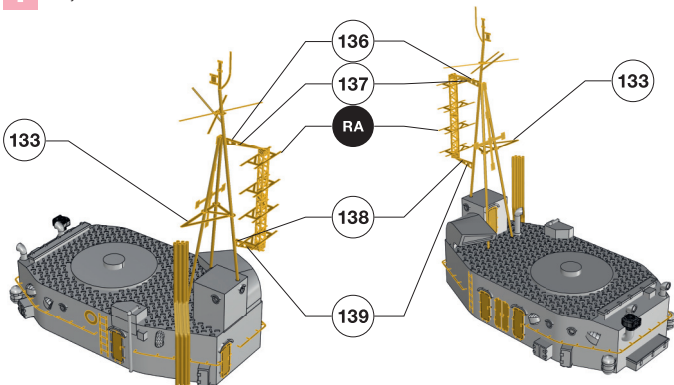
### Highly Detailed Waterline Resin Kit

#### AS Aft superstructure assembly – 1943 version:

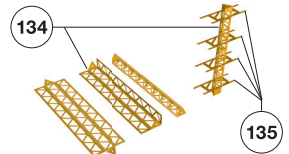


#### AS Aft superstructure assembly – 1944 version:

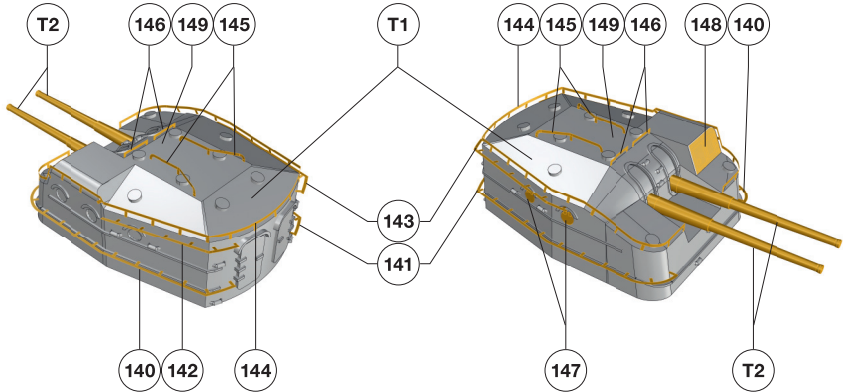
! Only differences are shown here.



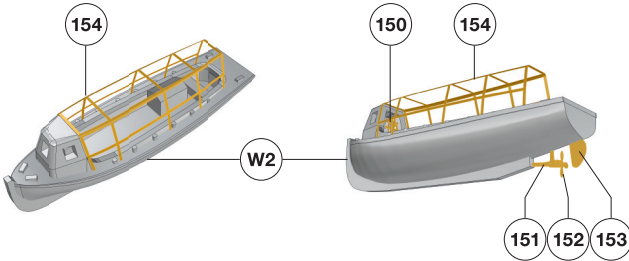
#### RA Radar assembly:



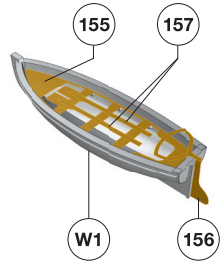
## MT Main gun turrets assembly:



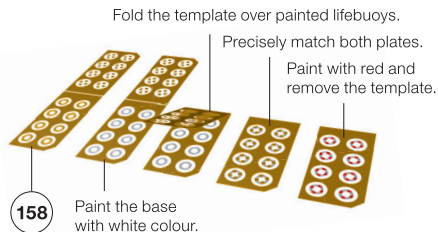
## ML Motor launch assembly:



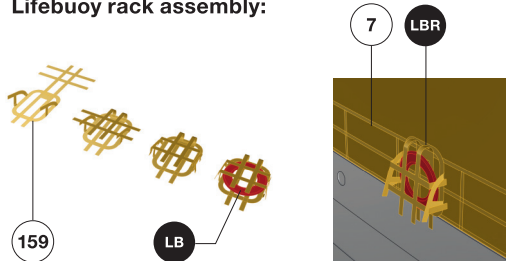
## CU Cutter assembly:



## LB Lifebuoy assembly:



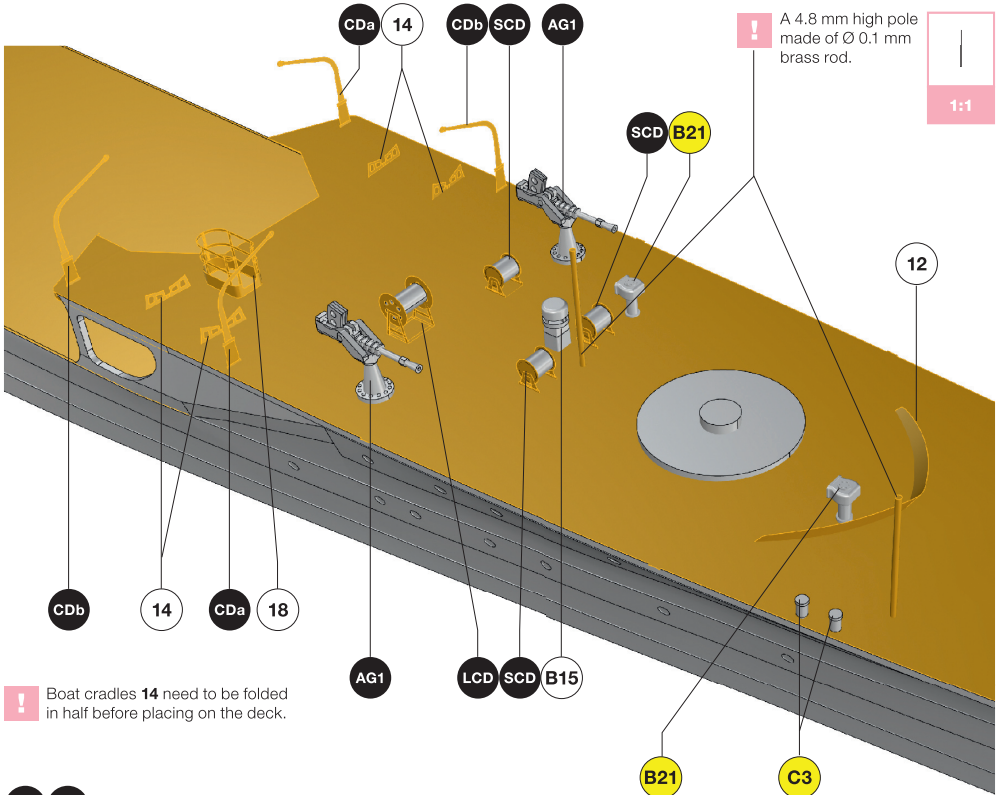
## LBR Lifebuoy rack assembly:



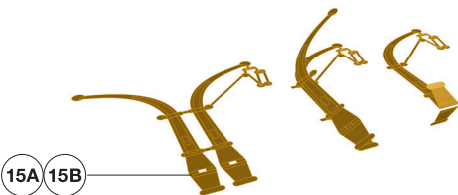
# SO70026

## 1/700 IJN Destroyer Shimakaze 1943/44 Highly Detailed Waterline Resin Kit

### Forecastle deck fittings:



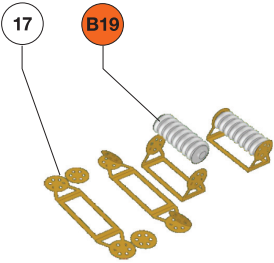
### CDa CDb Cutter derrick folding sequence:



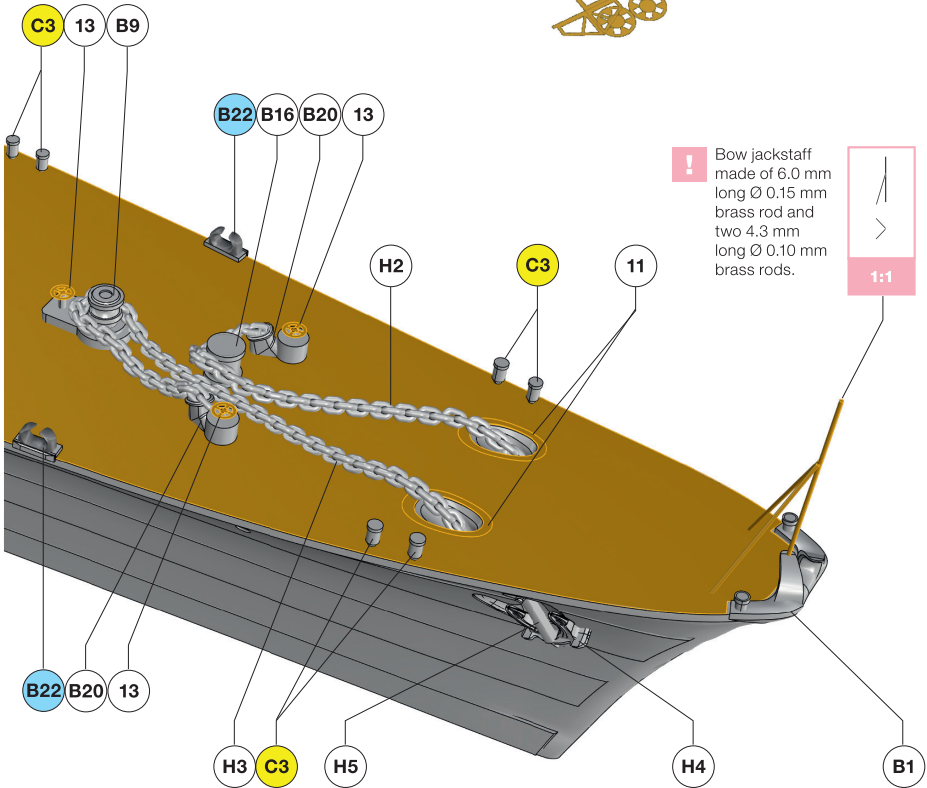
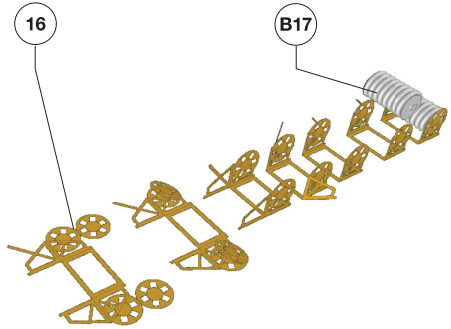
! Single 25 mm AA guns **AG1** are present on the 1944 version only!



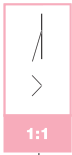
**SCD** Small cable drum assembly:



**LCD** Large cable drum assembly:



**!** Bow jackstaff made of 6.0 mm long  $\varnothing$  0.15 mm brass rod and two 4.3 mm long  $\varnothing$  0.10 mm brass rods.



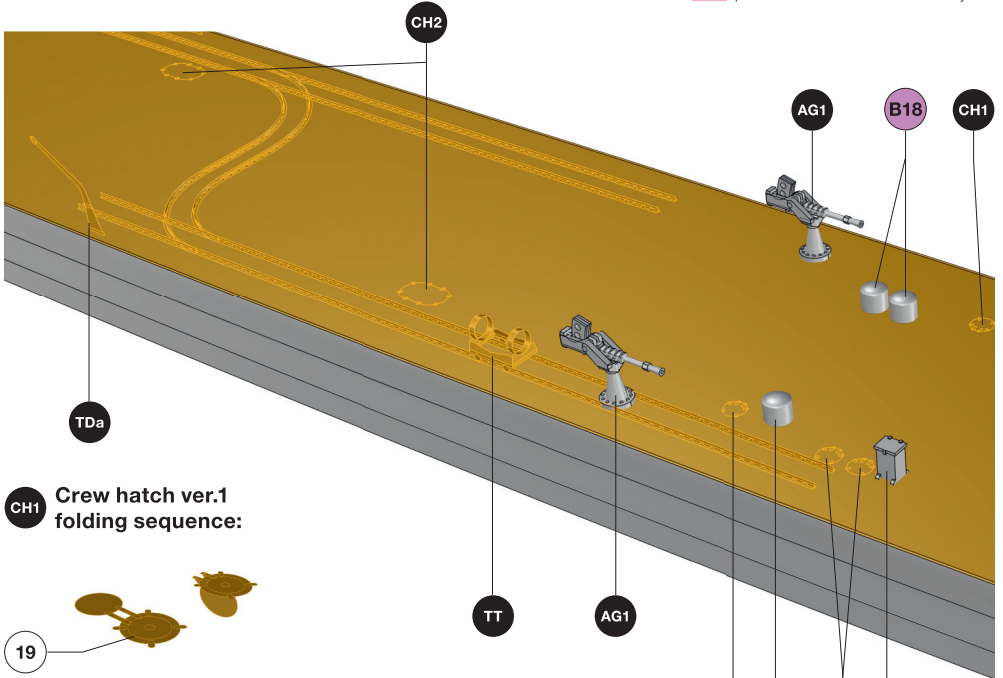
# SO70026

## 1/700 IJN Destroyer Shimakaze 1943/44

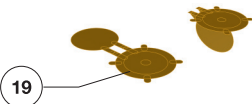
Highly Detailed Waterline Resin Kit

### Midships deck fittings:

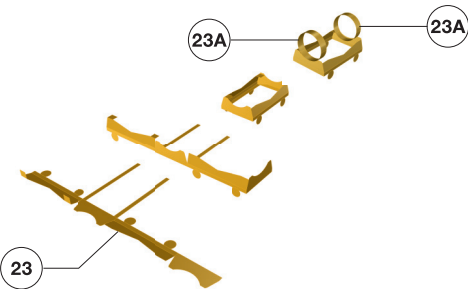
**!** Single 25 mm AA guns **AG1** were present on the 1944 version only!



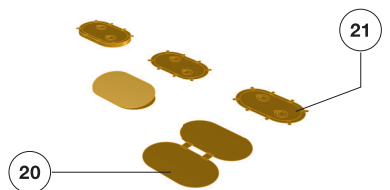
#### CH1 Crew hatch ver.1 folding sequence:



#### TT Torpedo trolley folding sequence:



#### CH2 Crew hatch ver.2 assembly:

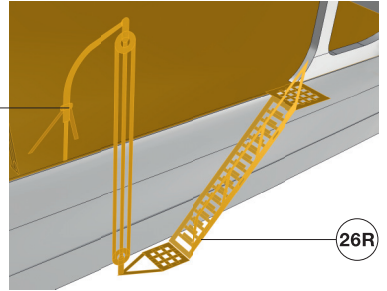


**TDa** **TDb** **Torpedo derrick folding sequence:**

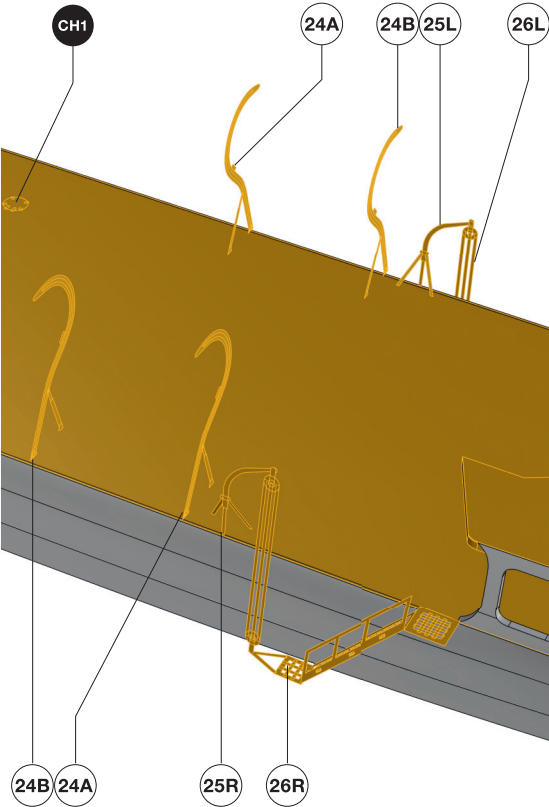


22A 22B

25R



26R



**!** The gangways are handed and their layout is symmetrical on both sides.

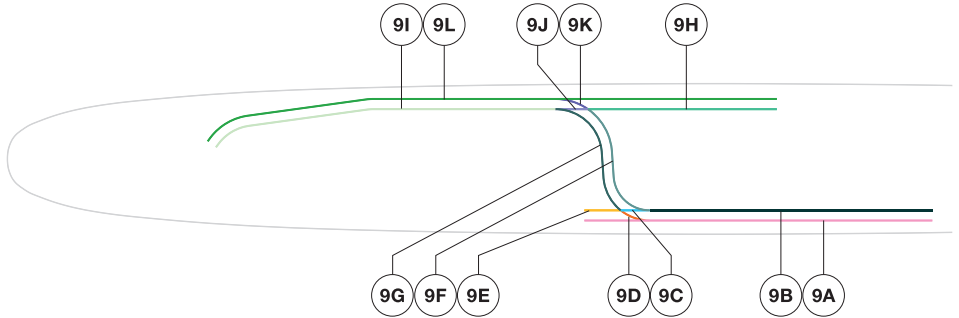
**!** Boat derricks **34** need to be folded in half before placing on the deck.

# SO70026

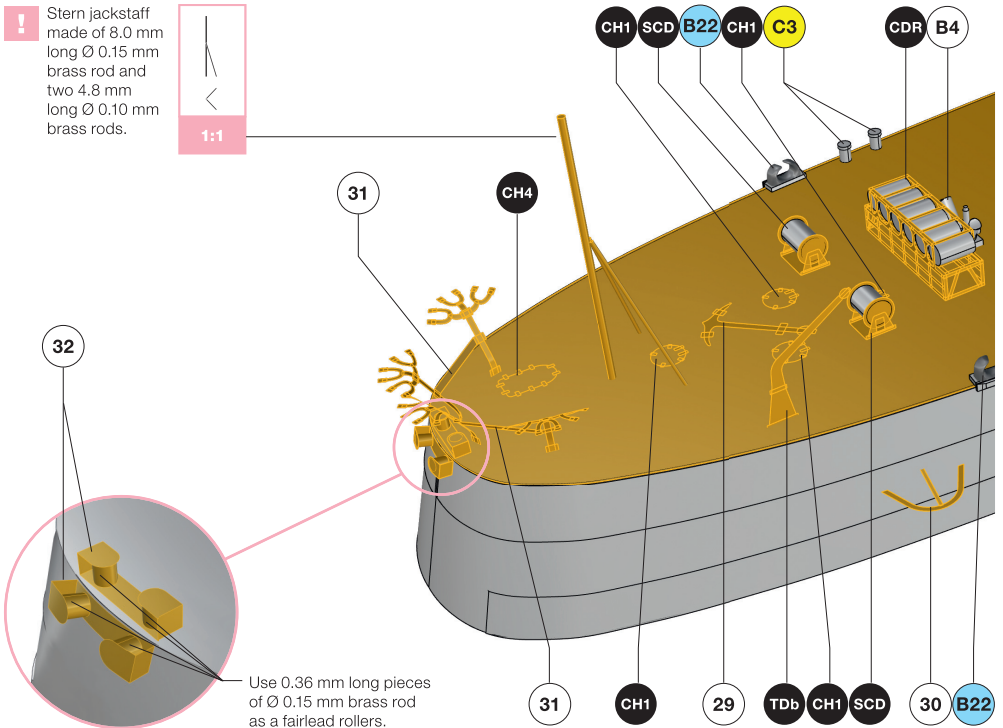
## 1/700 IJN Destroyer Shimakaze 1943/44

Highly Detailed Waterline Resin Kit

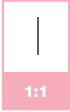
### Rear deck fittings – 1943 version:



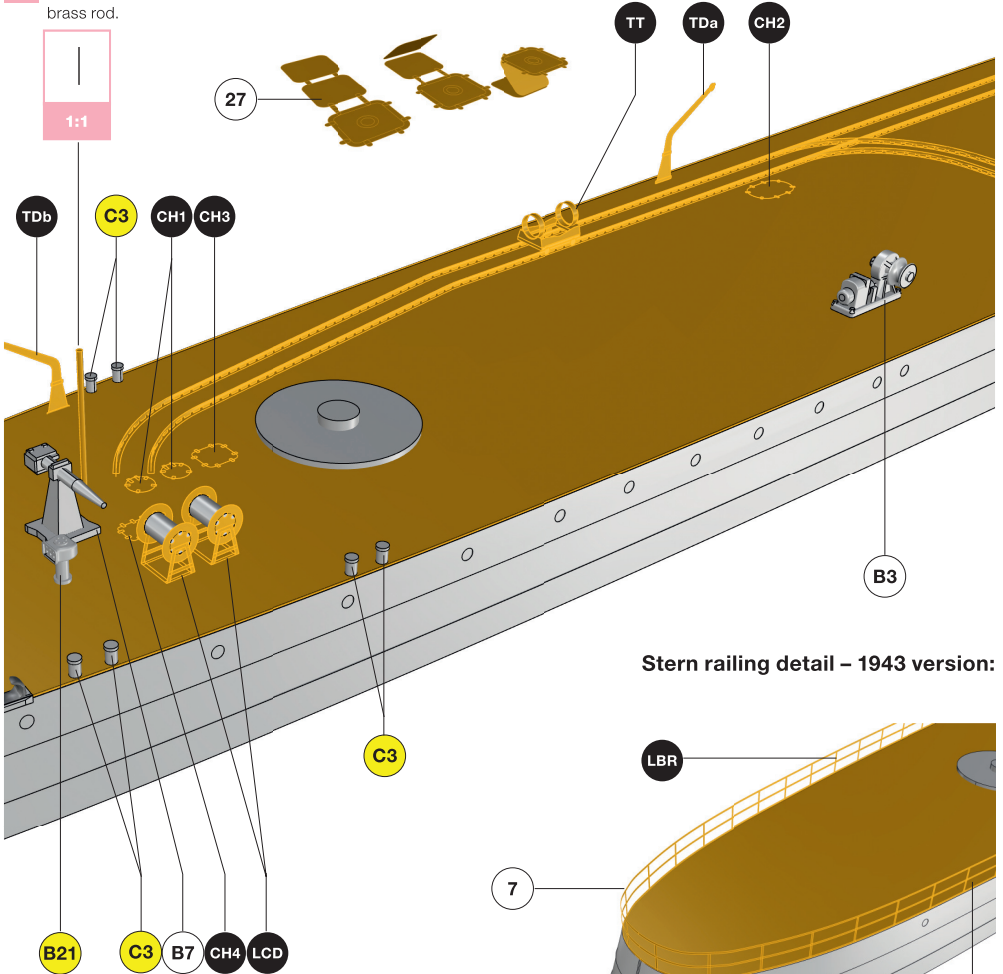
**!** Stern jackstaff made of 8.0 mm long  $\varnothing$  0.15 mm brass rod and two 4.8 mm long  $\varnothing$  0.10 mm brass rods.



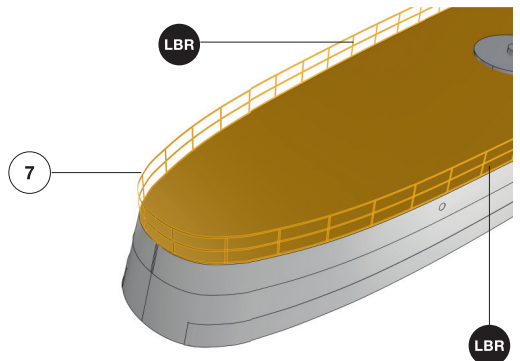
**!** A 5.0 mm high pole made of  $\varnothing$  0.1 mm brass rod.



## Crew hatch ver.3 assembly:



## Stern railing detail – 1943 version:

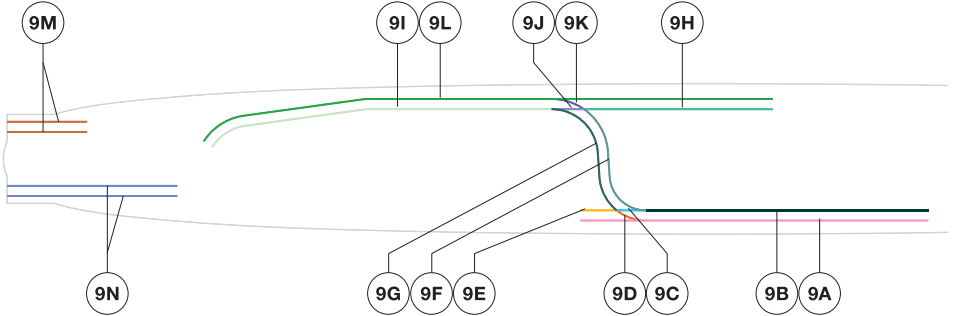


# SO70026

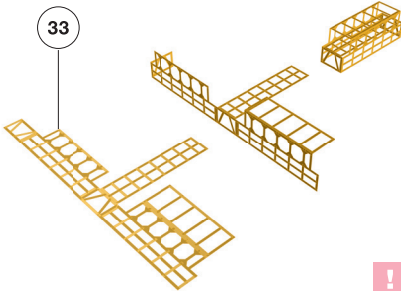
## 1/700 IJN Destroyer Shimakaze 1943/44

Highly Detailed Waterline Resin Kit

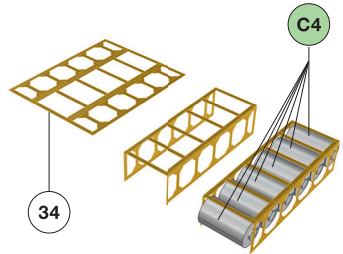
### Rear deck fittings – 1944 version:



### CDR Center depth charges rack assembly:

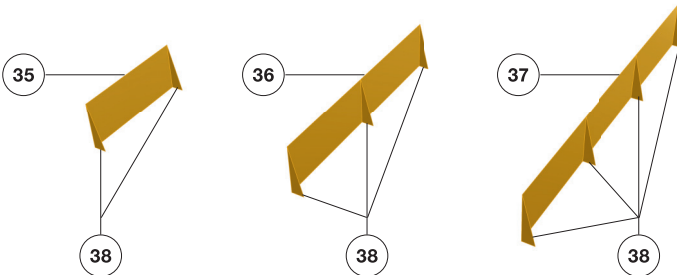


### SDR Side depth charges racks assembly:



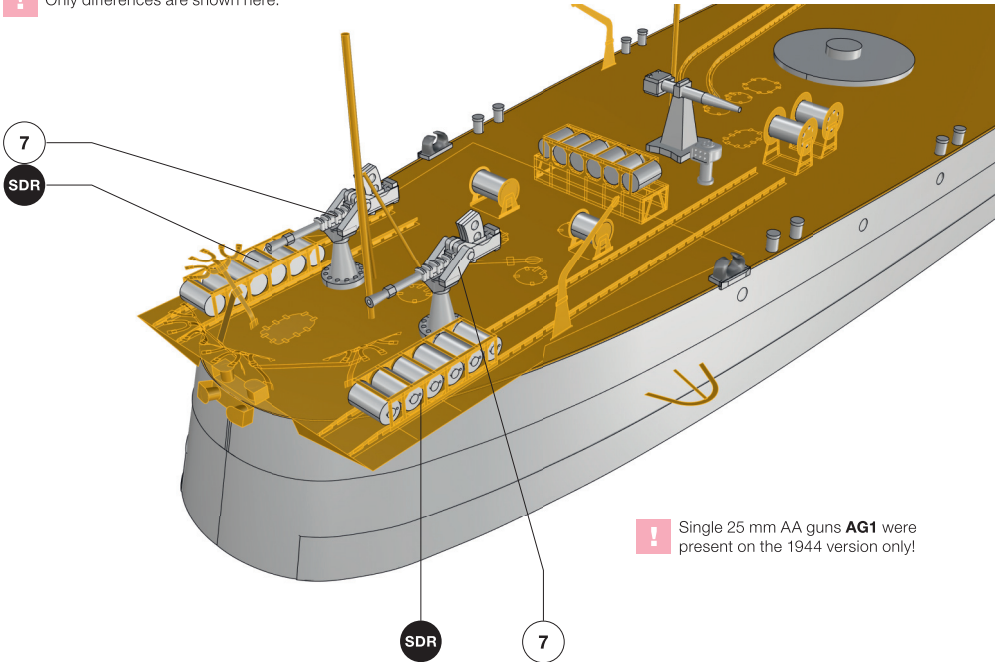
! Use depth charges – parts **D4**  
– to fill-in both kinds of racks.

### SA1 SA2 SA3 Side armour plates for 25 mm guns – 1944 version only:



! Check the placement  
of the armour plates  
with your references.  
Presence of shorter  
armour plates **SA1**  
and **SA2** is only  
a hypothesis.

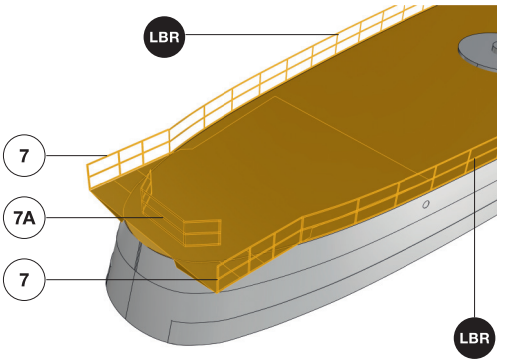
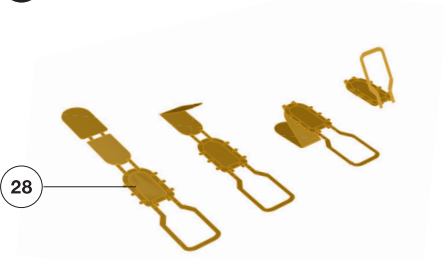
! Only differences are shown here.



! Single 25 mm AA guns **AG1** were present on the 1944 version only!

### Stern railing detail – 1944 version:

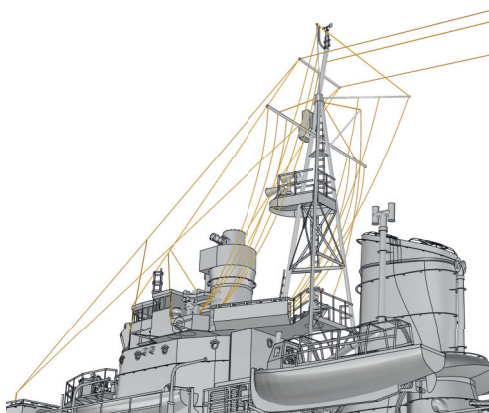
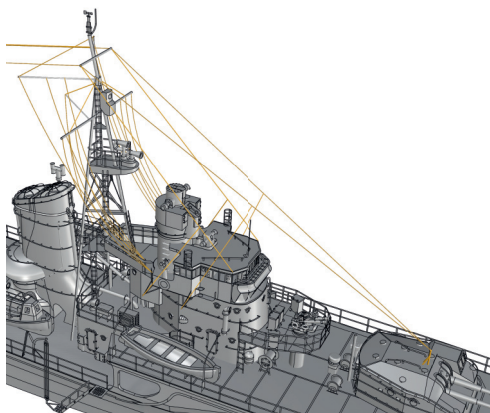
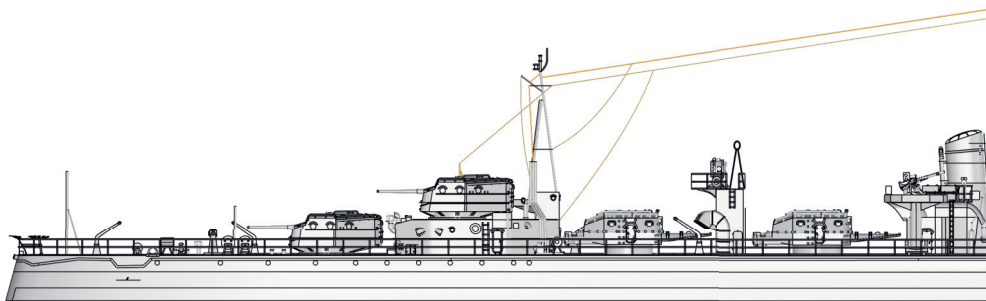
### CH4 Crew hatch ver.4 assembly:



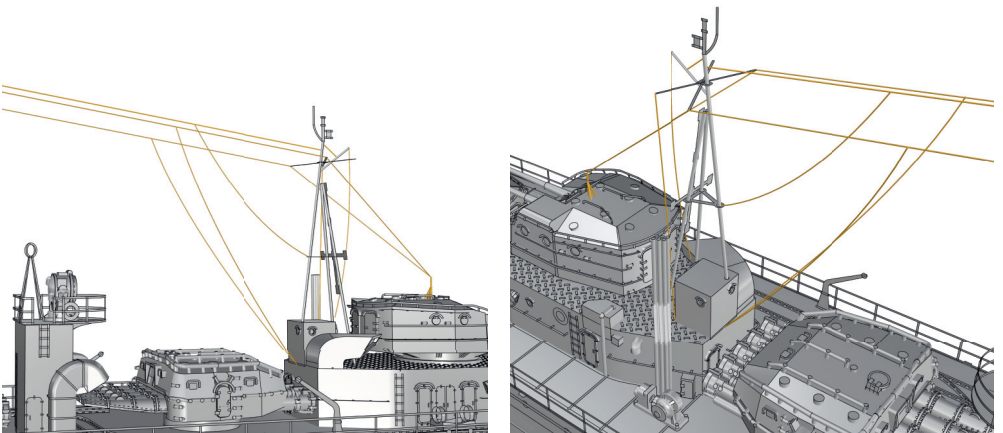
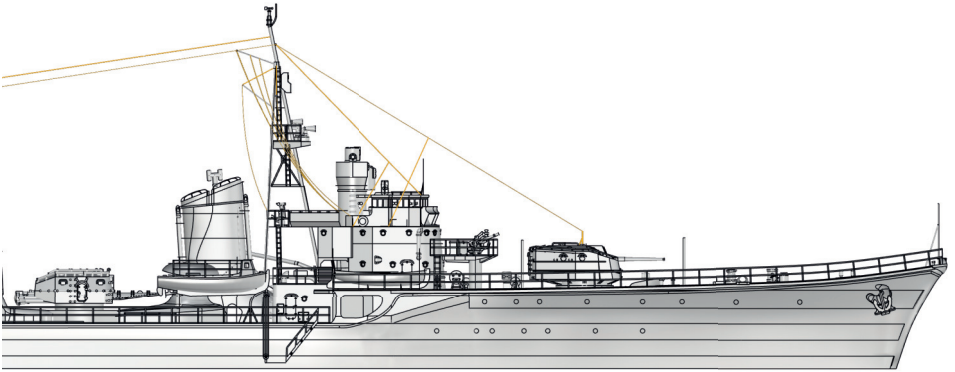
# S070026

1/700 IJN Destroyer Shimakaze 1943/44  
Highly Detailed Waterline Resin Kit

Rigging scheme – 1943 version:



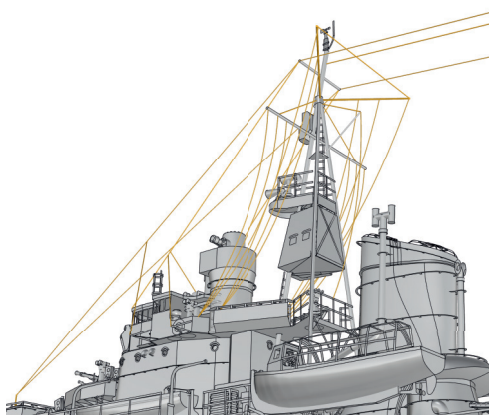
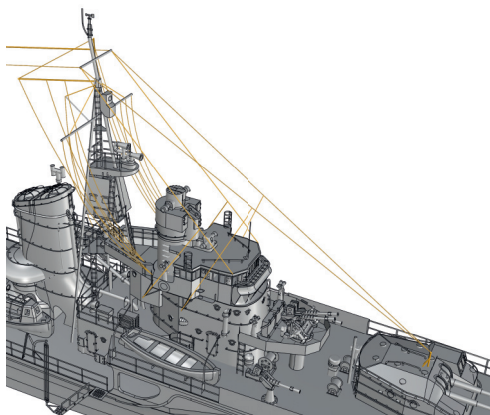
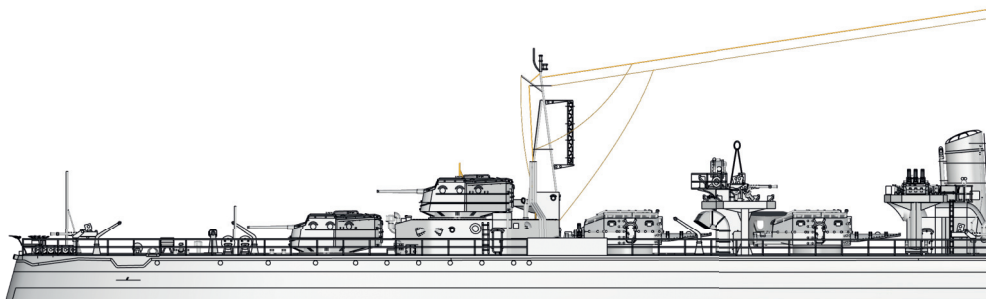


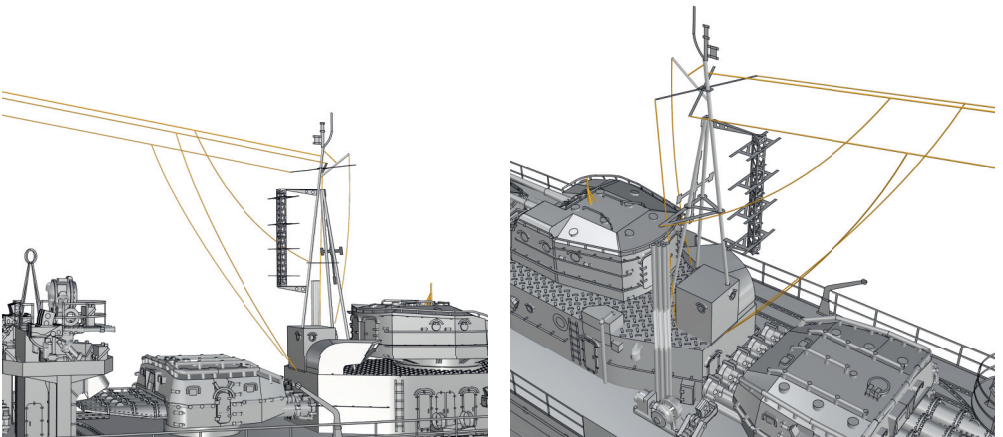
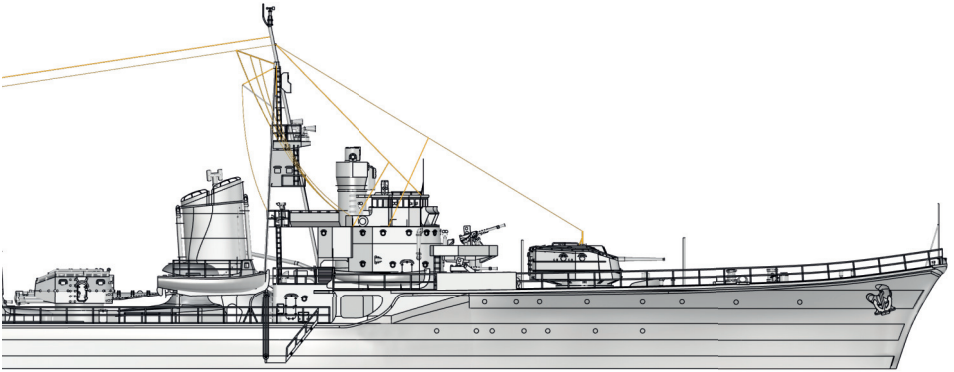


# S070026

## 1/700 IJN Destroyer Shimakaze 1943/44 Highly Detailed Waterline Resin Kit

Rigging scheme – 1944 version:





# SO70026

## 1/700 IJN Destroyer Shimakaze 1943/44

Highly Detailed Waterline Resin Kit

# Shelf Oddity

### Colour and markings guide:

According to standard IJN practice dry-docked vessels were repainted while in dock. Shimakaze was completed in May 1943 at Maizuru shipyard and the Maizuru IJN Grey was used. In August 1943 she was dry-docked in Yokosuka and the Yokosuka IJN Grey was most likely used. The last visit in a dry-dock took place in April 1944 at Kure Naval Base and most like Kure IJN Grey was used in her final livery.

