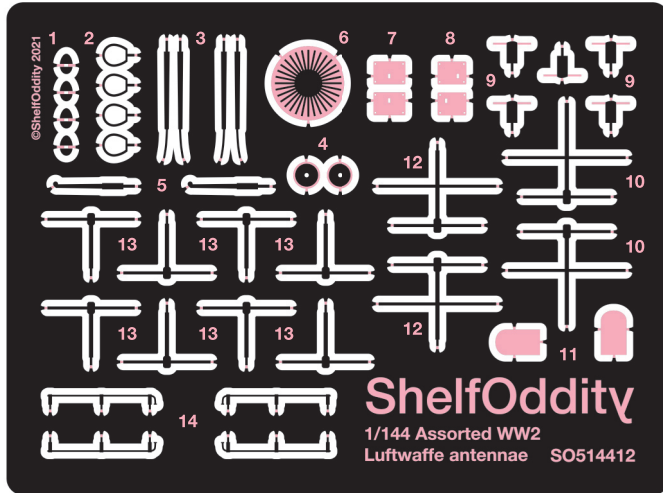


SO514412

1/144 Assorted WW2 Luftwaffe aircraft antennae generic set

Shelf
Oddity

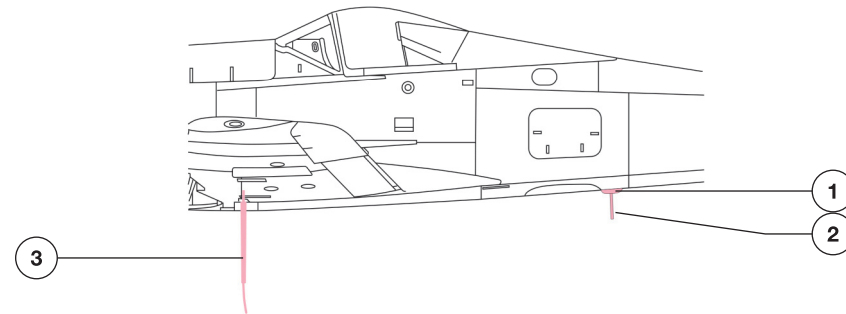


This photo-etched detail set is designed as an upgrade to various Luftwaffe WW2 airplanes fitted with radar and/or electronic equipment.

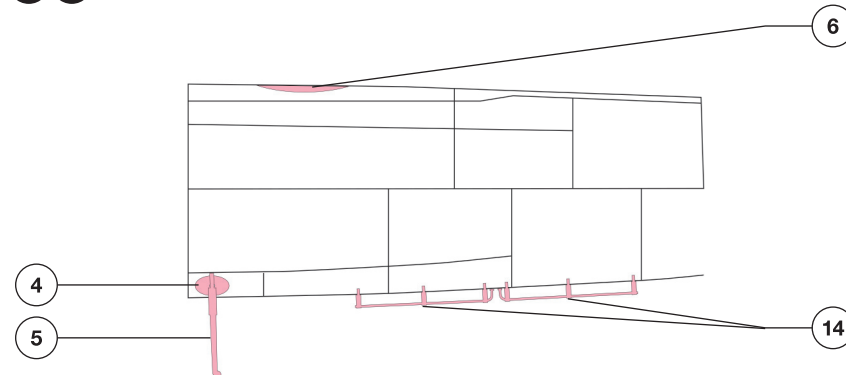
The set contains the following aerials (exemplary types of aircraft which carried given aerial are mentioned in brackets) – some parts are duplicated to act as spares:

- A** Four FuG 16 ZY loop radio antennae (Bf 109G, Fw 190, etc.)
- B** Four FuG 16 ZY Morane blade radio antennae (Bf 109G, Fw 190, etc.)
- C** Two FuG 10 trail antennae masts (Bf 110, Ju 88, etc.)
- D** One PeilG 6 radio direction finder aerial (Ar 234, Do 217, He 219, Ju 88/188 etc.)
- E** Two sets of FuBl 2 instrument landing system antennae – early version (Bf 110, Ju 88/188, etc.)

A B Fw 190D – a port side view

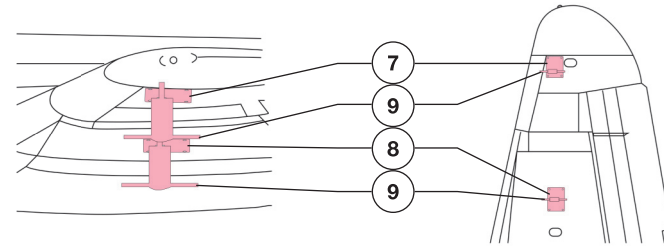


C D E Ju 88C-6 – a port side view

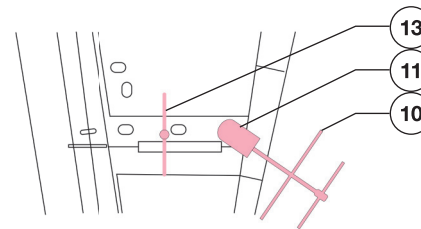


- F** Two under wing FuG 101 radio-altimeter antennae – inner position (Fw 190, Ju 88/188, etc.)
- G** Two under wing FuG 101 radio-altimeter antennae – outer position (Fw 190, Ju 88/188, etc.)
- H** Two FuG 217 Flensburg radar detector antennae mounted under wing, early version (Bf 109G, Fw 190, Ju 88 etc.)
- I** Two FuG 217 Flensburg radar detector antennae mounted on wing leading edge, late version (Bf 109G, Fw 190, Ju 88/188 etc.)
- J** Eight FuG 217 Flensburg radar detector antennae mounted on upper and lower side of the wing (Bf 109G, Fw 190, Ju 88/188 etc.)

F G Ju 88G-6 – port wing views



H J Ju 88C -6 – port wing bottom view: early FuG 227 installation



- !** Parts 11 (dipole mounting point fairings) need to be shaped before application to your model. Check your references.
- !** The starboard wing in both cases features the big dipole only: parts (10,11) for early- and (11) only for the later FuG227 installation.

G J Ju 88G-6 – port wing bottom, front and upper views: later FuG 227 installation

