

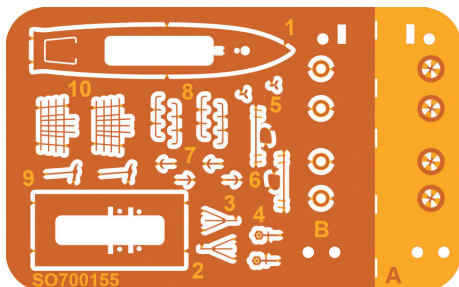
SO700155

1/700 IJN 17 m Steam Pinnacle Ceremonial Barge Set

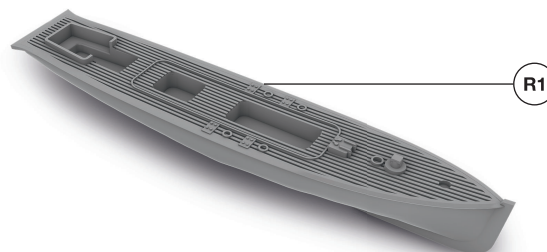
Shelf
Oddity



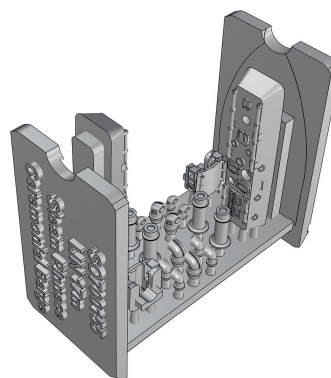
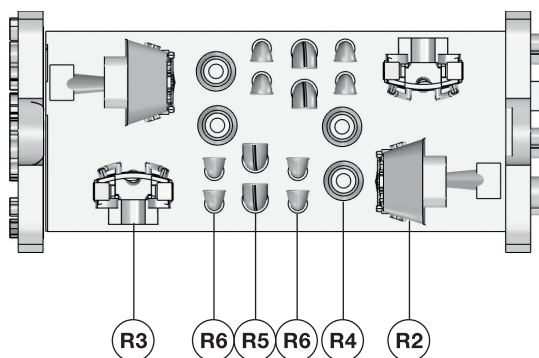
The general view of PE fret.



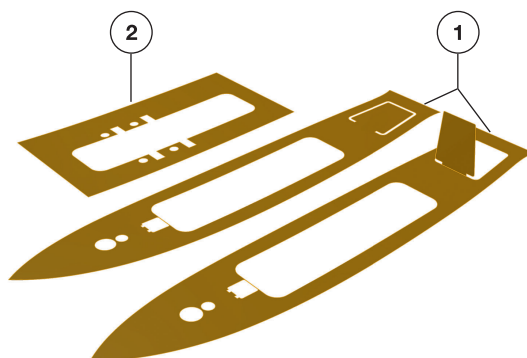
Resin parts.



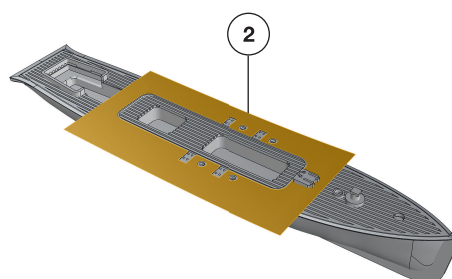
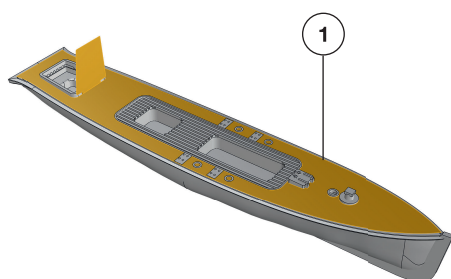
3D-printed resin parts.



1. Fold and prepare photoetched painting masks (1, 2).



2. The way of application of photoetched painting masks (1, 2).



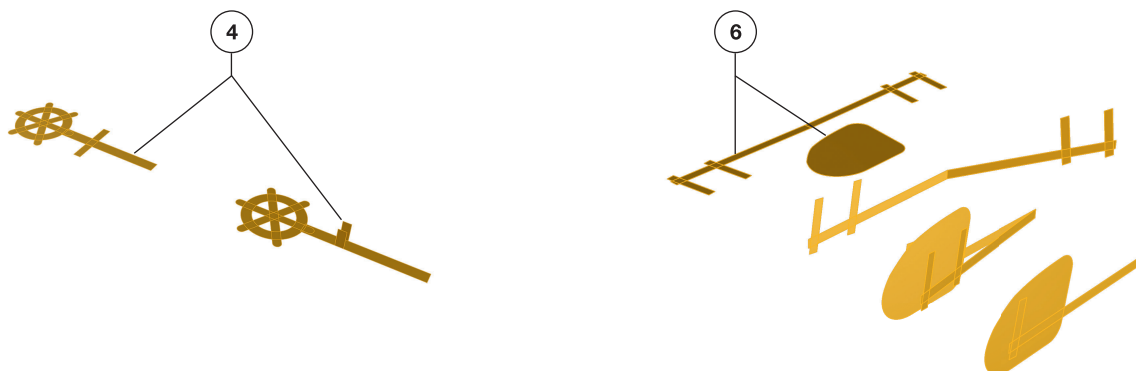
SO700155

1/700 IJN 17 m Steam Pinnacle Ceremonial Barge Set

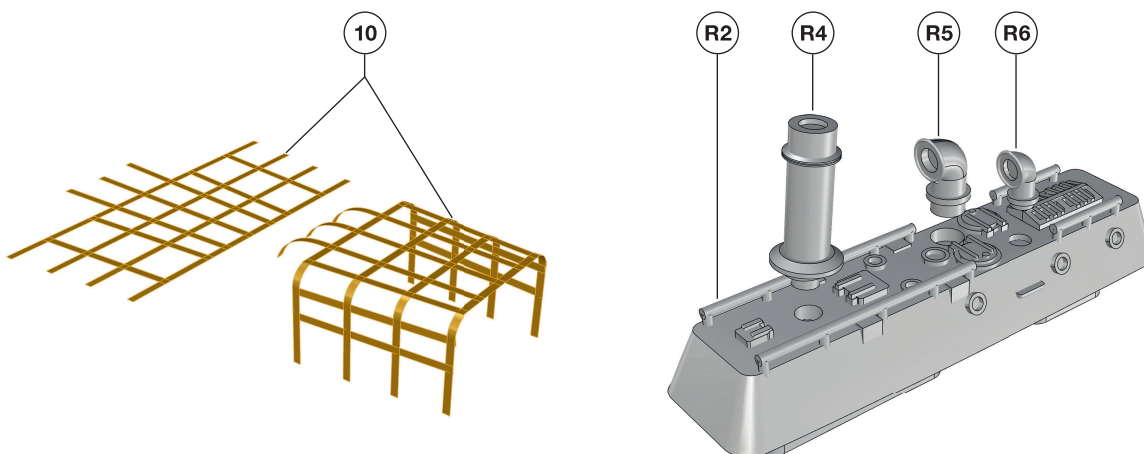
Shelf
Oddity



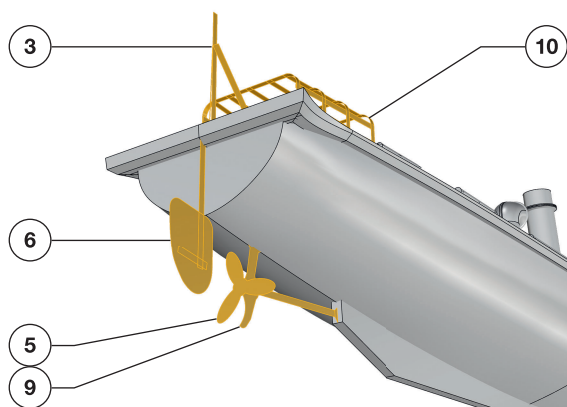
3. Fold photoetched steering equipment (4, 6).



4. Fold photoetched rear cabin framework and assembly the main superstructure (10, R2, R4, R5, R6).



5. Assembly the steering & propulsion equipment (5, 6, 9).

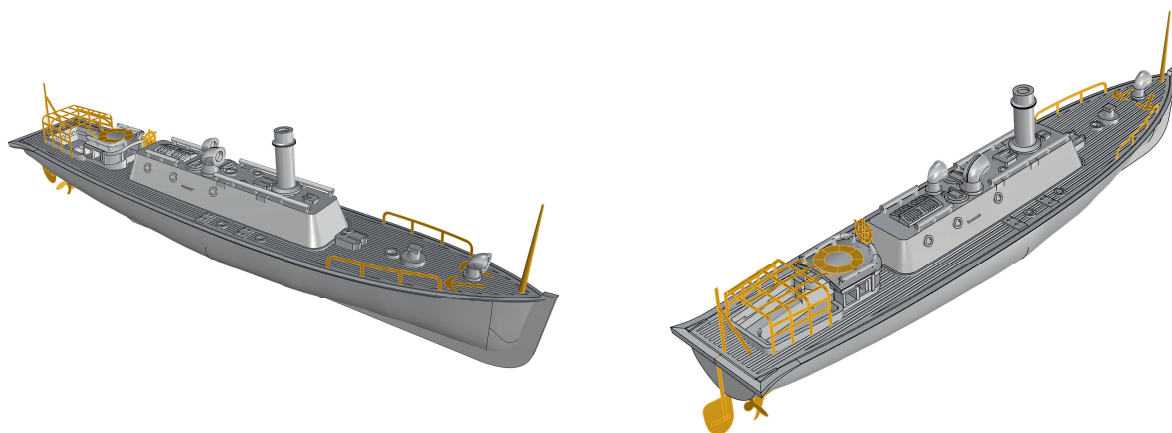
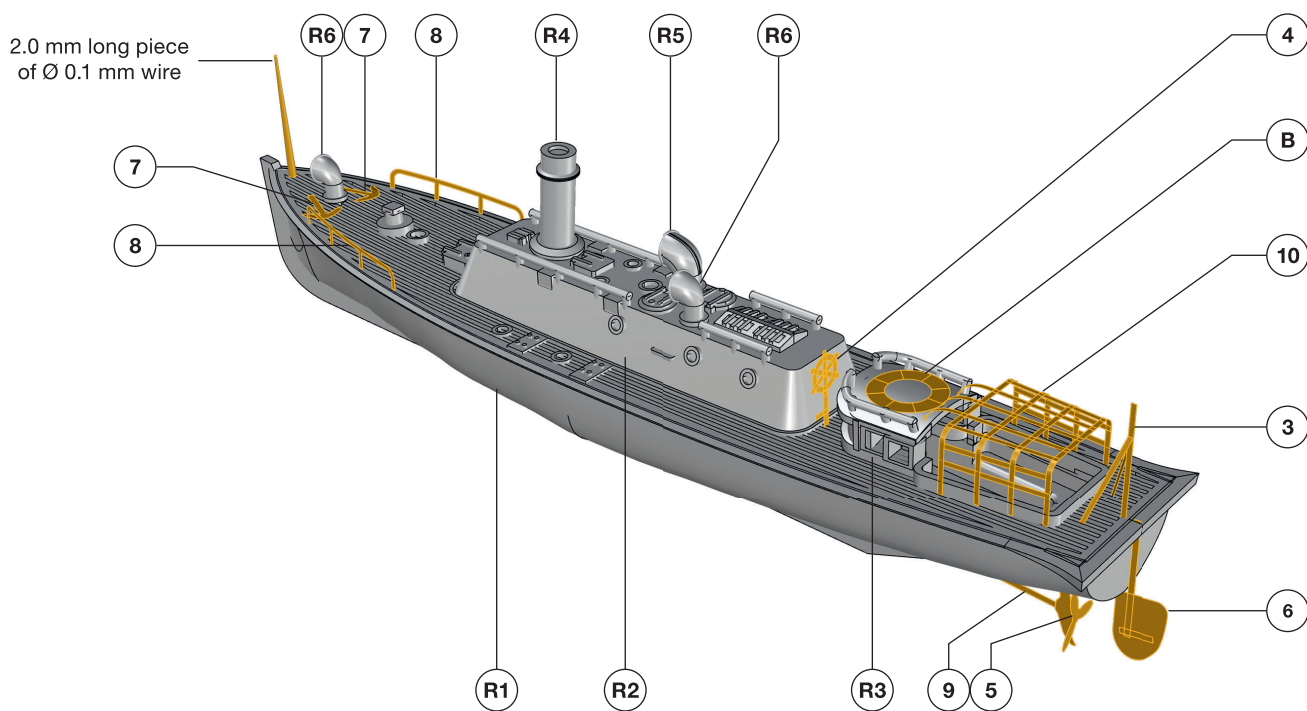


SO700155

1/700 IJN 17 m Steam Pinnace Ceremonial Barge Set



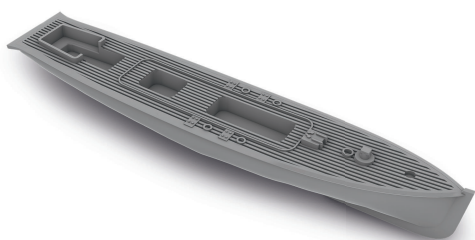
6. The complete boat assembly.



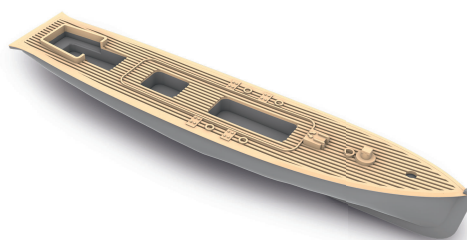


7. Painting & assembly sequence.

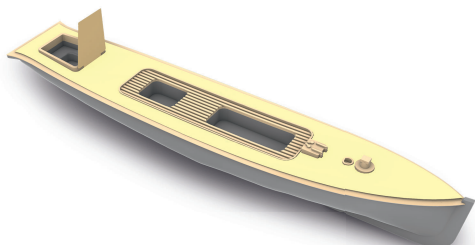
(A) base: Grey



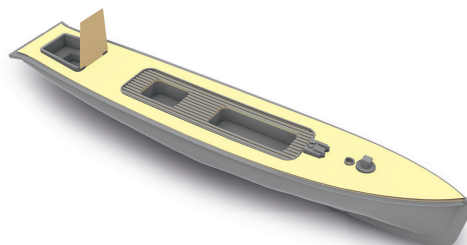
(B) deck: Wood colour



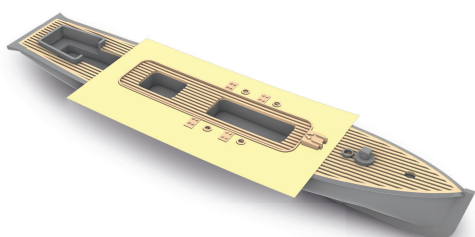
(C) apply brass mask (1)



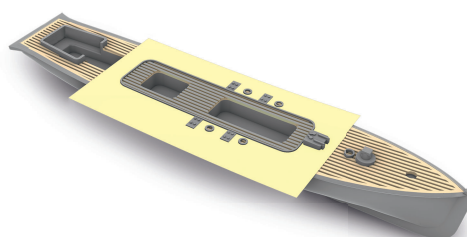
(D) deck equipment: Grey



(E) remove brass mask (1) and apply brass mask (2)



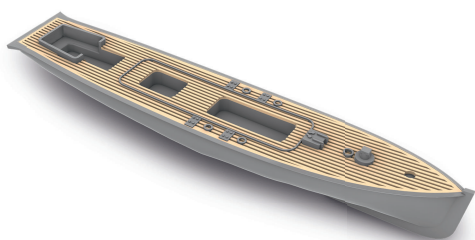
(F) deck equipment: Grey



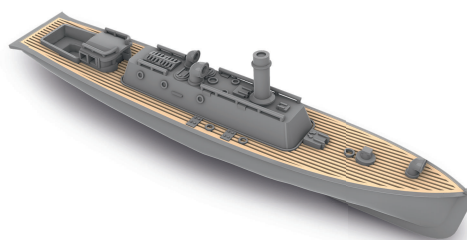


7. Painting & assembly sequence – continued.

G brass mask (2) removed



H superstructures attached: Grey



I equipment and flagpole attached: Grey



J railings attached: natural Brass colour



K lifebuoy attached: White & Red





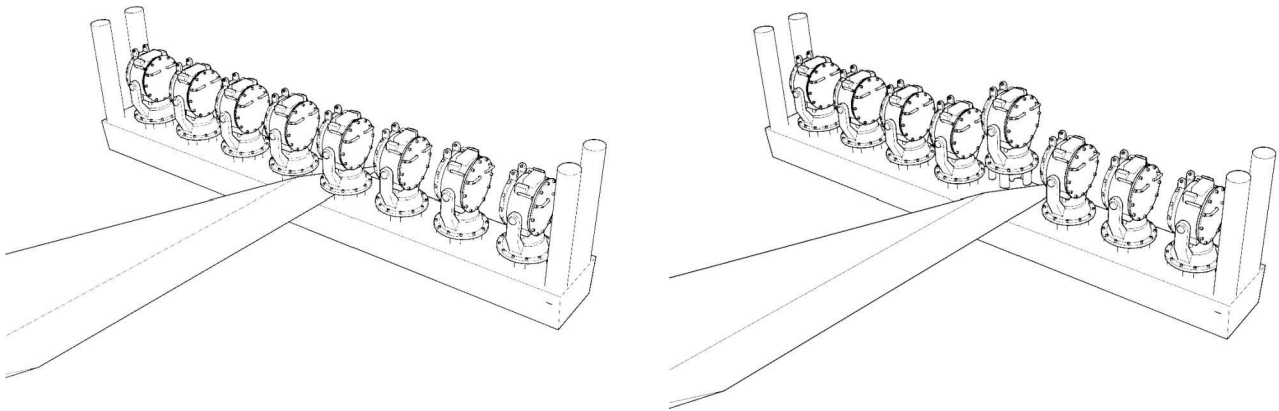
Our products are designed and manufactured in order to achieve the best possible accuracy and real outlook. Manufacturing process may make some minor individual differences among the same items or minor deformations. These can be visible in high zoomed pictures.

General accuracy achieved in our product has reached 0.03 mm.

Due to manufacturing process resin comes as best possible combination of mechanical properties. We have found optimal ratio between mechanical resistance, hardness and elasticity. However resin is fragile. Please take high attention when work with.

Cutting from the waffles

Items are connected to base by supports. Generally support are cylindrical and conical. By using sharp knife cut single support and continue on next one until all become detached.



Then remove rest of support to create proper surface.



Drilling holes and material removal

The resin used for these sets is fragile. Using extensive force or aggressive attempts of removing material may lead to breakage of parts. Please pay high attention when selecting the tooling for work with resin. Do not over-apply force while cutting and drilling in resin.

